

# PROPOSAL

Presented To:

**CVG** <sup>TM</sup>

for

## **INTALATION OF 170MW Power Plant**

*By*

**DERWICK**

**DERWICK ASSOCIATES CORP.**



Proposal 710-  
January 14, 2010

**This document is privileged and contains confidential information intended for use only by  
CORPORACION VENEZOLANA DE GUAYANA**

January 14, 2010

**CORPORACION VENEZOLANA DE GUYANA**  
EDIFICIO CVG  
PUERTO ORDAZ  
REPUBLICA BOLIVARIANA DE VENEZUELA

Dear Sirs;

Derwick Associates Corp. is pleased to provide our updated and detailed turnkey proposal for the design, construction, installation and commissioning of a (2) Unit Frame 7EA power plant to be located in the complejo SIDOR.

.

**Scope of Work**

Attached is our Technical Scope Document (TSD) which describes in detail, the scope of supply we have included in this proposal. Based on our understanding of the possible site requirements, our scope includes everything required to complete the construction of a typical plant. This includes but is not necessarily limited to the following:

- All Civil Works required for the construction and installation of the plant.
- All Mechanical Works required to erect and assemble the equipment including piping, structural supports, etc. as completely described in the TSD.
- All Electrical Works required to install the interconnect control cabling, power cabling, testing and commissioning of the plant.
- All Project Management required to coordinate the work and maintain the Project Schedule as defined in the TSD.
- All Engineering required to design the plant including both conceptual and detailed.
- All startup, commissioning and testing of the plant to prove successful operation prior to putting the plant into commercial operation.

**Schedule**

As defined in Section 8 of the TSD and based on our past experience in constructing "Fast Track" Frame 7EA projects, we can complete the construction of this plant in (3) months from reception of the units at site.

**Price**

The firm fixed price for the turnkey construction of the plant consisting of Two (2) Frame 7EA gas turbine packages as described in the attached TSD is  
**US\$ 62,541,377**

**Payment Terms and Commercial Terms & Conditions**

Derwick Associates Corp. will negotiate in good faith commercial terms and conditions which are mutually acceptable to both parties.

**Validity**

This proposal is valid for period of (30) days.

We appreciate the opportunity to provide this proposal and look forward to providing the turnkey services to construct this plant on a fast track basis.

**Instrucciones para transferencias:**

Intermediary Bank:

Citibank, N.A.

ABA: 021000089

Sucursal: New York

Dirección:

111 Wall Street, New York, NY 10043

Beneficiario:

International Union Bank, S.A.

Cuenta: 36246731

Dirección:

Ave. Samuel Lewis, Edif. Omega Piso 5,  
Apartado 0391 Wtc Panamá, Republica de  
Panamá

FFC: Davos International

Bank/000767-224-001

Ref: Derwick Associates/

13102362

**Terms & Conditions**

This proposal shall be valid for thirty (30) days; provided, however, the obligation to treat this proposal as confidential, and that it cannot be shared with any third party without the prior written consent of Derwick Associates Corp. shall survive.

**CVG** and Derwick will negotiate in good faith to establish general terms and conditions that are usual and customary.

The logo for Derwick Associates Corp. features the word "DERWICK" in a bold, white, sans-serif font, centered within a solid black rectangular box.

DERWICK ASSOCIATES CORP.

---

We appreciate the opportunity to provide this proposal and look forward to providing the turnkey services to construct this plant on a fast track basis.

Sincerely,

Pedro Trebbau  
Derwick associates Corp.



DERWICK ASSOCIATES CORP.

---

## Table of Contents \*

<b>Section 1.0</b>	<b>Introduction *</b>
<b>Section 2.0</b>	<b>Scope of Work and Equipment Supply Matrix *</b>
<b>Section 3.0</b>	<b>Balance of Plant Equipment *</b>
<b>Section 4.0</b>	<b>Design Basis and Interconnect Points *</b>
<b>Section 5.0</b>	<b>Plant Process and Performance</b>
<b>Section 6.0</b>	<b>Plant and Equipment Warranties *</b>
<b>Section 7.0</b>	<b>Project Management and Organization *</b>
<b>Section 8.0</b>	<b>Project Schedule Typical</b>
<b>Section 9.0</b>	<b>Quality Assurance Plan *</b>
<b>Section 10.0</b>	<b>Exceptions and Clarifications *</b>
<b>Section 11.0</b>	<b>Drawings</b>
<b>Section 12.0</b>	<b>Major Equipment Specifications</b>
12.1	Oily Water Separator
12.2	Instrument Air Compressor
12.3	Plant DCS System (By ProEnergy EPC)

---

## **Section 1.0 Introduction**

Derwick Associates Corp. (DAC) hereinafter named “Contractor” is submitting this Proposal Technical Scope Document (TSD) to (Owner) CORPORACION VENEZOLANA DE GUAYANA in response to the proposed Frame 7EA Simple Cycle Power Project to be located at a site to be defined in Venezuela. This proposal is for the Engineering, Design, Procurement, Construction, Start up and commissioning of the Simple Cycle Project.

This TSD is submitted with the understanding that CVG has purchased (2) natural gas fueled GE Model 7121 Frame 7EA (60Hz) as Turbine Generator packages and associated balance of plant equipment. CVG will make arrangements and cover the cost to clearing customs then transport from the Venezuelan Port to the site.

The TSD addresses the requirements for utilizing both natural gas and # 2 Diesel fuel in the gas turbine generators. The natural gas and diesel fuel must meet the GE specifications for large turbine fuel requirements.

The plant will utilize the following major equipment:

- Two (2) GE Model 7121 Frame 7EA Gas Turbine Generators
- One (1) 13.8KV / 230KV Generator Step Up Transformer
- One (1) 230KV SF6 Breaker

The various sections included in this TSD address the Scope of Supply, Equipment Specifications, Plant Process Description, Expected Plant Performance, Design Basis, Warranties, Schedule, and Proposal Drawings.

**THIS DOCUMENT IS CONFIDENTIAL. IT IS DESIGNED AND INTENDED FOR THE PROJECT OWNER'S, USE ONLY. THIS DOCUMENT IS FOR THE SOLE PURPOSE OF EVALUATING DERWICK' PROPOSAL ON THIS SIMPLE CYCLE POWER PLANT.**

## **Section 2.0 Scope of Work and Equipment List**

### **2.1 The Scope of Work for the proposed project is generally outlined as follows:**

Major Equipment – Owner will supply Two (2) GE Model 7121 Frame 7EA Gas Turbine Generators with auxiliaries. One (1) 13.8KV to 115KV Generator Step Up Transformer (GSU), 115 KV Breaker and 115KV Disconnect Switch.

#### **2.1.1 Contractor will provide the Balance of Plant which includes the following outlined list of major equipment and deliver them to site:**

- One (1) 7,000 cu meter DFO tank
- One (1) 1,000 cu meter DFO tank
- DFO transfer and forwarding pumps with fuel filters
- Demin transfer and forwarding pumps with filters
- Demin Fiberglass Storage Tanks
- Oily Water Separator
- Instrument and Service Air Compressor
- Office and Control Building
- DCS System

The contractor will design and install the facility as described in the following sections of this document. The design will include the necessary Civil, Foundations, Structural, Mechanical, Electrical, Instrumentation, and Control System to install the above listed equipment.

#### **2.1.2 Balance of Plant – The contractor proposes to furnish and install the Balance of Plant equipment and materials, which comprises the following:**

- Complete design of the facility including civil, foundations, structural, buildings, mechanical, electrical, instrumentation and control.
- Contractor will provide site preparation, material and labor for concrete foundations, piers and plant gravel.
- Contractor will provide Installation of the complete Power Plant with the inter-ties as described later in this document.
- Contractor will provide mechanical installation of the various items of equipment with the associated inter-ties of treated water, natural gas, liquid fuel, waste water, and Fire Water.
- Contractor will provide installation of the plant including the 115 KV high voltage GSU, 115KV SF6 breaker, 115KV disconnects, dead end tower
- Contractor will provide Instrumentation and Control Systems including plant instrumentation, metering, and Plant DCS.
- Contractor will install Owner supplied buildings including:
  - GTG PEECC Buildings
  - PDC Building



**DERWICK ASSOCIATES CORP.**

## **Frame 7EA Power Project Technical Scope Document**

- Contractor will furnish and install following Buildings:
  - Climatized Control and Office Building
- Contractor will also supply the following:
  - Natural Gas Interconnect Piping to Existing Header System Adjacent to Plant
  - Liquid Fuel Tank 7,000 cubic meter
  - Liquid Fuel Interconnect Piping to Contractor furnished 1,000 cubic meter Day Tank adjacent to Plant
  - Treated Water Interconnect Piping to Existing Demin Tank
  - Treated Water Day Storage
  - Waste Water Interconnect Piping to Existing Header System
  - Fire Water Interconnect Piping to Existing Header System
  - Plant fire Water Underground Piping System with Monitors, Hydrants, Etc.
- Project Management, QA/QC, Safety and Training.
- In addition, the Contractor will perform:
- Plant commissioning, check out, start up, and training with Vendor Technical Representatives present.
- Plant Performance, Reliability, and Environmental Testing.
- Furnishing of plant documentation including Vendor Information, Warranty, Engineering, Turnover documents, O&M Manuals and As Built Drawings.





DERWICK ASSOCIATES CORP.

## Frame 7EA Power Project Technical Scope Document

### Section 2.2 Equipment List - Detailed Division of Responsibility

Material/Responsibility	Qty	Description
<b>OWNER</b>	2	GE Model 7121 Frame 7EA (60Hz) Gas Turbine Generators with Associated Equipment as Coming From Southhaven Including:
<b>Electrical</b>	1	Electrical PDC Building
	2	13.8 KV 5000 amp Gas Turbine Generator Breakers NEMA 3R
	2	15KV Cable Bus 4500 A
	1	115 KV SF6 Circuit Breaker
	1	115 KV Disconnect Switch
	1	13.8 KV / 480 V 3000 KVA Station Service Transformer
	1	13.8 KV / 4160 V 3380 KVA Station Service Transformer
	2	4160V 800 HP Starting Motors
	2	480 V GTG MCC
	1	480 V Distribution board
	1	13.8 KV / 115 KV Generator Step up transformer (2 ea. GTG capacity)
<b>Mechanical</b>	2	L.O. Cooler w/cooling water fin-fans (3-50hp) & water pumps (2- 75Hp)
	2	Fuel Gas Metering
	2	Fuel Gas Module/Purge Air
	2	Fuel Gas Heaters
	2	Fuel Gas Filter/Coalescer
	2	Demin Water Inject Pump 100 hp
	2	Demin Water Filters
	2	Liquid Fuel Inject Skids
	2	Liquid Fuel Filters
	2	Fogging Pump Skids
	2	Inlet Air Fogging Systems
	1 Lot	Project Site free and clear of rock and ground water
	1 Lot	Natural Gas Fuel Tie in Point at Plant Boundary with measurement
	1 Lot	#2 Diesel Fuel Supply Inter-tie Point
	1 Lot	Treated Water Supply to Inter-tie Point – 272 gpm
	1 Lot	Treated Water for Commissioning and Startup
	1 Lot	Waste Water Disposal Line at Inter-tie Point
	1 Lot	Eight (8) Telephone Circuits to Project Site
	1 Lot	Permits for Environmental, Transportation, Building, Construction, Operations, etc.
	1 Lot	Construction & Commissioning Water and 480V three phase power
	1 Lot	Access Roads to site
	1 Lot	Import Duties and Taxes
	1 Lot	Construction lay down area (3 acres) adjacent to project site
<b>Contractor – Derwick Responsibility</b>		
<b>Civil / Structural</b>	1 Lot	Removal of all unused building foundations, underground piping, etc. on the proposed project site
	1 Lot	Site Preparation, Rough Grading, Excavation, and final grading
	1 Lot	Plant Concrete Foundations
	1 Lot	Plant Paving, Gravel and Pads for Turbine and Generator
	1 Lot	Basic Architectural Treatment and landscaping



**DERWICK ASSOCIATES CORP.**

<b>Material/Responsibility</b>	<b>Qty</b>	<b>Description</b>
<b>Contractor (Continued)</b>		
<b>Buildings</b>	1	Climatized Control and Office Building
<b>Mechanical</b>	2	100% Demin Water Forwarding Pumps – 10Hp – 300 gpm
	6	Demineralized Gallon Water Storage Tanks, 21,000 Gallon each
	2	100% Demineralized Water Forwarding Pumps for Turbine Wash
	1	Oily Water Separator
	1	Waste Oil Tank, 10,000 Gallon.
	1	Waste Oil Delivery Pump
	1	Waste Water Tank, 10,000 Gallon
	1	Waste Water Delivery Pump
	1	Instrument Air Package with two compressors, receiver, filters and dryer
	1	Liquid fuel storage tank, (7,000 Cu. Meters)
	2	Liquid Fuel forwarding Pumps
	1	Liquid Fuel Day Tank (1000 cu. Meters)
	2	Liquid Fuel Forwarding Pumps
	4	Liquid Fuel Filters
	1	Natural Gas ESD Valve
	1	Natural Gas Scrubber
	2	Fuel Gas Regulator Skid
<b>Electrical</b>	1	480 V BOP MCC
	1	480 V Distribution Board
	1 Lot	BOP 480 V / 120 V Transformers, Lights, Panels etc.
	1	UPS System for Control Room
	4	Welding Receptacles
	1	Plant Grounding Grid
	1 Lot	Lightning Protection
	1 Lot	Cathodic Protection for underground steel piping
	1 Lot	Area Lighting
<b>I&amp;C</b>	1 Lot	Plant Instrumentation
	1	Plant DCS System
<b>Construction</b>	1 Lot	Construction Tools, Rental Equipment & Rental Cranes
	1 Lot	Temporary Power Distribution
	1 Lot	Local Subcontractor(s) Electrical & Mechanical Craft Labor
	1 Lot	Transportation of all Contractor supplied BOP equipment
	1 Lot	Construction Offices, Storage, Temporary Facilities and Utilities
	1 Lot	Lubricants, Chemicals, Filters, etc. for Plant Commissioning
	1 Lot	Balance of Plant Start up and Commissioning Spare Parts
<b>Engineering</b>	1 Lot	Conceptual and Detail Design Engineering (Total Plant)
<b>Project Management</b>	1 Lot	Project Management with QA/QC, safety, and training
	1 Lot	Plant Commissioning and Testing
	1 Lot	Overall Plant Training



DERWICK ASSOCIATES CORP.

## Section 3.0 Major Plant Equipment Description

The following is a brief description of equipment and the proposed manufacturer for the balance of plant equipment.

### 3.1 Mechanical Equipment

3.1.1 Two (2) each natural gas fueled GE Model 7121 Frame 7EA Gas Turbine Generator (See Scope of Supply in Appendix 12.1) – Supplied by Owner. These units will be converted to dual fuel by Contractor.

3.1.2 Exhaust Stack - Free standing vertical exhaust stacks will be furnished by Owner and installed by Contractor. The stack will be internally insulated with silencer.

Scope of supply is as follows:

- Expansion joint
- Transition duct
- Elbow duct with access door
- Emissions ports
- Ladders and platforms
- All bolting hardware, gaskets, and field insulation
- Painting per Owner selected color

Typical design characteristics of the stack to be provided are as follows:

Approximate Stack Height	100 feet
Near field silencing-at 3ft/5 ft above grade	85 dB(A)
Far field silencing –at 400ft/5ft above grade	59 dB(A)
Exterior Casing Material	ASTM A36 carbon steel
Interior liner material	409 stainless steel
Insulation material	High temperature ceramic fiber

3.1.3 Lube Oil Cooling Water Coolers for Two Gas Turbines with – Two (2) 100% lube oil cooling sump pumps Supplied by Owner

3.1.4 Natural Gas – Contractor will install fuel gas scrubbers, heaters, and regulators which will be furnished with the (2) each gas Turbine Generators. Contractor will run fuel gas interconnect piping to the Owners' pipeline header system located adjacent to the Power Plant. The Owner will be responsible for coordinating the tie into the existing pipeline.

3.1.5 Demin Water to be supplied by Owner must meet the GE Gas Turbine Generators specifications below



DERWICK ASSOCIATES CORP.

## Frame 7EA Power Project Technical Scope Document

	6.0	Limit	Test Method
Total Matter, PPM, Max	5		ASTM D1888
Dissolved Matter, PPM, Max	3		ASTM D1888
PH*	6.0-8.0		ASTM D1293
Conductivity*, Micromhos/CM 25°C, Max	0.5-1.0		ASTM D1125
Sodium + Potassium	0.1		ASTM D1428
Silicon Dioxide, PPM, Max	0.1		ASTM D859
Chlorides, PPM, Max	0.5		ASTM D512
Sulfates, PPM, Max	0.5		ASTM D516

\* Measured when water is free of carbon dioxide.

- 3.1.6 Demin Water – Contactor will install Demin Water interconnect piping to the Owners' Demin Tank as shown on the Plot Plan. Contractor to furnish and install 126,000 gallons of Demin Water Tanks with redundant forwarding pumps to supply the inlet air fogging system and the turbine water injection system. This will include redundant Demin Water Filters for each Turbine.
- 3.1.7 Liquid Fuel – Contractor will modify the (2) each Gas Turbines to run on liquid fuel complete with all package piping, instrumentation, etc. Contractor will furnish and install redundant liquid fuel forwarding pumps from a new Contractor Furnished 7000 Cu Meter DFO Tank, as shown on the Plot Plan. Furnish and install an 8" line from 7000 Cu Meter Tank to a new 1,000 Cu Meter Day Tank and redundant liquid filters for each gas turbine.
- 3.1.8 Fire Water – contractor will install Fire Water interconnect piping to the Owners' pipeline header system. The Owner will be responsible for coordinating the tie in. The contractor will furnish and install the fire water piping system complete with Monitors and Hydrants for the plant.
- 3.1.9 Oily Water Separator – Contractor will furnish an Oily Water Separator as manufactured by Highland Tank to receive the drains from the Gas Turbines, GSU, and other oily water sources. The separator will have a gravity flow rate of 150 GPM. Waste Oil from the Oily Water Separator will be routed to a 10,000 gal storage tank with a forwarding pump to pump oil to a waste oil truck. The waste water will be routed to a 10,000 gal waste water tank with a forwarding pump which will pump the waste water to the waste water pipeline header system adjacent to the plant.
- 3.1.10 Instrument/Service Air Compressors – Instrument and Service air will be supplied by one (1) instrument air packages designed to provide up to 185 scfm of dry air at 125 psig. The package will include two (2) compressors, filters, accumulator and a dryer designed to produce air at a -40°F dew point. The compressor is equivalent to an Ingersoll-Rand model UP6-50-125 electric reciprocating compressor. (See Vendor Catalog Sheet in Appendix 12)



**DERWICK ASSOCIATES CORP.**

- 3.1.11 Piping, Piping installation and Piping Insulation-The piping for the facility will be fabricated and installed per the Power and Boiler Piping Code, ANSI B31.1. The fuel gas and steam piping shall be installed in accordance with ANSI B31.1 Power Piping. All pipe welds to be done by individuals certified to ASME Section IX. Piping materials will be provided according to the piping specifications that can be found in the Appendix under Section 12.6.

Fuel gas, oil, water, and hydraulic pipe welds will also be performed in accordance with ASME. Acceptance criteria will be indicated in ANSI B 31.1.

All underground carbon steel piping shall be wrapped or coated and cathodically protected. Carbon steel piping shall be jeeped prior to cover. Cathodic protection will be provided by the passive method which utilizes protective anodes and provides inspection coupons at strategic locations to monitor for potential corrosion.

All low pressure piping for water service will be fabricated from fiberglass reinforced plastic (FRP) pipe to meet plant corrosion requirements.

Piping insulation will be provided for all steam piping to meet the requirements of the hot piping insulation specifications located in the Appendix under Section 12.

- 3.1.12 Cathodic Protection System – The cathodic protection system will be installed to control the electrochemical corrosion on the exterior surfaces of underground carbon steel, stainless steel. The bottoms of soil or sand pad mounted steel tanks, the exterior surfaces of underground ductile or cast iron pipe will be installed with Cathodic protection will be CP protected as well.

## **3.2 Electrical Equipment**

- 3.2.1 Generator Step-up Transformer – The GSU Transformer is per the following information:

- Gas Turbine GSU – Owner Supplied to serve (2) GTGs.  
13.8KV delta primary voltage and 230 KV wye secondary voltage
- Standard high voltage, full capacity de-energized taps at  $\pm 2 \times 2.5\%$  with switch provisions for padlocking.
- Overhead outdoor type bushings for high and low voltage and neutral connections with spade type connectors for cable connections.
- Cooling fans at 400 V 3-phase auto controlled from winding temperature
- Standard ANSI accessories for alarms and control and sudden pressure trip.
- One (1) bushing current transformers on each HV bushing for relay accuracy.
- One (1) bushing current transformer on neutral bushing.
- Station type lightning arrestors on HV side.

- 3.2.2 230 KV SF6 Circuit Breaker & Disconnect – Owner Supplied



**DERWICK ASSOCIATES CORP.**

## **Frame 7EA Power Project Technical Scope Document**

- 3.2.3 13.8 KV GTG Circuit Breakers – Owner Supplied - Each GTG will be 5000 amp, 3-phase, 60 HZ, 3-pole.
- 3.2.4 Auxiliary Transformers – Owner Supplied - The auxiliary transformers are as follows:
- One (1) Pad mounted 13.8 KV / 480 V, 3000 KVA, 3-phase, 60 Hz, oil filled, 65°C rise OA.
  - One (1) Pad mounted 13.8 KV / 4160 KV, 3380 KVA, 3-phase, 60 Hz, oil filled, 65°C rise OA.
- 3.2.5 Power Distribution Center “PDC” – Owner Supplied. The “PDC” is equipped with 480V Distribution Panels and BOP MCC’s. It is a Climatized Building
- 3.2.6 480 Volt Distribution Switchboard – Owner Supplied. This equipment is indoor, metal enclosed, floor mounted cabinets containing distribution breakers.
- 3.2.7 480 Volt BOP MCC (Owner Supplied) – NEMA 1, indoor, with combination starters and breakers with NEMA class 1 type B wiring mounted in “PDC”.
- 3.2.8 PEEC Building – Owner Supplied. Each Gas Turbine is equipped with a PEEC Building which houses the Turbine control Panel, Generator Control Panel, GTG MCC Batteries and Chargers.
- 3.2.9 480/220-120 V Auxiliary Transformers – The low voltage transformers shall be indoor floor mounted, single and three phase as required for low voltage power.
- 3.2.10 Grounding and Lightning Protection – The plant and substation will be equipped with grounding system which is solidly tied into all plant equipment.

Ground conductors shall be sized in accordance with the NEC, below grade ground grid shall be a minimum of #4/0 AWG bare copper. Grounded neutral conductors shall be protected by a non-metallic conduit, where conductors run exposed above grade.

Ground rods shall be copper-clad steel, and shall not be less than ¾ inch in diameter by 10 feet in length. Each ground rod shall be driven into the ground. If the specified ground resistance cannot be met, longer ground rods or additional rods shall be installed and interconnected until the specified resistance is obtained. Connect ground rods 30 inches below grade.

Connections above grade shall be made with exothermic welds or compression connectors bolted to skidded equipment or structural steel. Connections below grade shall be made via an exothermic-welding process.

A ground loop inside, and a ground rod for manholes will be provided.



**DERWICK ASSOCIATES CORP.**

- 3.2.11 Lightning protection will be in accordance with NFPA 780 guidelines and provided where required for plant structures and well pumps. The structures requiring lightning protection shall be determined during detailed design by a lightning protection study conducted by the Contractor
- 3.2.12 Cable Tray - The cable tray shall provide support to electrical cable which is routed throughout the plant either directly to Equipment or to areas of concentrated electrical loads. All cable trays shall be of ladder type construction with a maximum rung spacing of 9 inches, nominal depths of 4 to 6 inches, and various widths as required. The cable tray shall be aluminum. There shall be a maximum spacing of 10 feet between cable tray supports, except fittings (elbows, tees, etc.) which shall be supported in accordance with NEMA standards.

Cable tray fittings shall have a radius equal to or greater than the minimum bending radius of the cables they contain.

Individual tray systems shall be established for the following services:

- 13.8 kV
- 480 volt power cables.
- Control cables.
- Special noise-sensitive circuits and instrumentation cables.

Further division shall be provided where required by individual Equipment manufacturers, particularly the GTG.

- 3.2.13 Conduit shall be used to extend circuits from cable tray, cable trenches, manholes, or wireways to equipment or cabinets, and for circuits between equipment and cabinets.

Conduit shall be used to protect conductors to individual devices, in hazardous areas, and where the quantity of cable does not economically justify the use of cable tray. All conduits shall be non-metallic or PVC covered rigid steel.

Raceway for communications, lighting, and receptacles, and installed in finished indoor non-hazardous locations may be PVC covered EMT.

PVC conduit shall be used for roadway lighting, duct banks, and for some below grade runs. Type EB PVC conduit shall be concrete encased. Schedule 40 PVC conduit shall be concrete encased or direct buried.

Rigid galvanized steel (RGS) with PVC cover shall be utilized for underground service, duct bank risers and bends, and elsewhere as specified.

- 3.2.14 Duct Bank - Duct bank shall be utilized when other types of raceway are not practical due to interferences with equipment or maintenance access and to route cables to remote areas.





**DERWICK ASSOCIATES CORP.**

All underground duct banks shall consist of PVC or RGS conduit encased in concrete. Reinforcing shall be furnished under all roadways, driveways, and as determined by the Contractor during detailed design. The nominal diameter of the ducts shall be no less than 2 inches and no greater than 5 inches. Galvanized steel conduit shall be installed where required for digital and analog low-level circuits requiring noise immunity from adjacent power circuits.

### 3.2.15 Gas Turbine 7EA High Voltage Equipment

Contractor to install Owner Furnished 13.8 / 115 KV GSU Transformer, 115 KV SF6 Breaker, 115 KV Disconnect, and Dead End Tower, Provide Metering and Protection Relay.

### 3.2.16 Power Cable

#### (1) 13.8 KV Power Cable

13.8 KV power cable shall be single-conductor, class B, stranded-copper, with extruded semi-conducting stranded shield, high-temperature extruded EPR insulation, extruded semi-conducting insulation shield, uncoated copper tape shield, and overall flame retardant CPE or Hypalon jacket. The cables shall have 133% insulation level. The uncoated copper tape shield maximum continuous operating temperature and short-circuit temperature of conductors shall be 105° and 250°C, respectively.

#### (2) 600 V Power Cable

The 600 V power cable shall be single conductor, class B, stranded annealed copper, with XHHW type insulation. The maximum continuous operating temperature of the conductors shall be 90°C in wet or dry locations. The minimum conductor size shall be #12 AWG routed in trays, conduits, or electrical ducts.

### 3.2.17 600 V Control Cable

The 600 V control cable shall be multi-conductor, class B, stranded annealed copper, with XHHW type insulation. The maximum continuous operating temperature of the conductors shall be 90°C. Each cable shall have at least 10% spare conductors (at least one spare for cables with fewer than 10 conductors). The minimum conductor size shall be #14 AWG, unless connecting a current transformer the minimum conductor size shall be #10 AWG. Color coding shall be NEC approved color scheme K-2.

#### (1) 300 V Instrumentation Cable





**DERWICK ASSOCIATES CORP.**

Instrument cable shall be 300 V, single twisted pair, or triad structured copper conductors, XHHW insulated, overall shield, XHHW jacketed, approved for cable tray use. The maximum continuous operating temperature shall be 90°C. Color coding shall be black & white for pairs and black, white, red for triads.

**(2) Thermocouple Extension Cable**

Thermocouple extension cable shall be used for extension leads from thermocouples to junction boxes and to instruments for measurements of temperature. Thermocouple cable shall be single pair or multi-pair shielded thermocouple extension solid conductor cable with a shield over each pair, an overall shield, flame retardant crosslinked insulation, rated for 105°C, CPE overall jacket, and shall be UL listed Type PLTC. The cable shall meet the flame test requirements of IEEE 383.

**3.2.18 Plant 120 amp 480 V Welding Receptacles**

**(1) 120 Volt Convenience Receptacles**

The Contractor will provide 220 volt, 15 amp convenience receptacles located around the facility and in all buildings. Location in buildings shall be in accordance with the local building codes and NEC requirements. It is understood maintenance workers will have 50-foot extension cords.

The control room shall have two (2) receptacles connected to the UPS system for each CRT, printer, and workstation installed.

The Contractor will provide welding receptacles as required through out the plant.

**3.3 Instrumentation and Control**

**3.3.1 Gas Turbine Control Panel (GTGCP)** – The GTG Control Panel is included as part of the GE Gas Turbine Package and is installed in the PEEC Climatized Control and Office Building. The GTGCP is a Woodward Sequencer and Control.

**3.3.2 Plant Distributed Control System (DCS)** – A Plant control system based on DCS technology is provided. The system interconnects the Balance of plant systems, and gas turbine to a central PLC computer based control system. Specifications and a detailed description of the DCS system are included in the appendix under section 12. The DCS System is housed in the Climatized Control and Office Building.

**3.3.3 Plant Instrumentation**

**(1) General Installation**

All instruments will be located where they will be accessible from ladders, platforms, or grade. All locally mounted indicating instruments shall face forward toward the normal



**DERWICK ASSOCIATES CORP.**

operating area and shall be within reading distance and in the line of sight. Instruments shall be mounted such to make accessible for maintenance.

Signals for analog control system inputs shall be provided from process transmitters at 4-20 mA signal level, or direct wired RTDs and thermocouples. Pneumatic signals shall be 3-15 psi.

**(2) Thermocouples and Resistance Temperature Detectors**

Thermocouples and extension wire will comply with the standard limits of error according to ANSI MC96.1-1975 and shall be Type K or Type J.

Thermocouples and RTDs shall have stainless steel sheathed elements, spring-loaded to provide good thermal contact with the thermowell.

**(3) Thermowells**

Temperature sensors shall be equipped with thermowells and of one piece, solid bored Type 316 stainless steel (or higher alloy if required for the application) of step-less tapered design. Maximum bore internal diameter shall be 0.385 inches.

**(4) Flow Elements and Flow Meters**

Flow elements shall be provided in accordance with appropriate applications.

All flow measurements shall be taken using orifice plates, vortex shedding meters, magnetic flow meters, or other Owner approved equals.

Magnetic flow meter suitable for well water applications shall be rated for continuous submergence.

**(5) Transmitters**

Transmitters shall be of the smart electronic two-wire type, HART compatible and capable of driving a load of at least 500 ohms with non-interacting zero and span adjustments and remote recalibration features. Transmitters shall provide a 4-20 mA signal for signals to the BOP control system. The accuracy of all transmitters shall be 0.5 percent of the calibrated range or better. Repeatability shall be 0.1 percent or better. Transmitters utilized for measuring differential pressure, flow, and level shall be furnished with a preassembled valve manifold suitable for mounting directly on the transmitter. All parts of the transmitters in contact with the process medium shall be constructed of Materials suitable for the application and pressure-temperature conditions encountered. Transmitters are to be Fisher Rosemount.

**(6) Gas Meters**



DERWICK ASSOCIATES CORP.

## Frame 7EA Power Project Technical Scope Document

Fuel gas certified fuel flow metering will be provided by the GTG Vendor. Fuel flow information will be available through the gas turbine to BOP control system communications interface. The plant fuel gas meter was described in an earlier section.

### (7) Temperature, Pressure, Level, and Flow Switches

Temperature, pressure, level, and flow switches shall generally have two Form C contacts for each actuation point. Switch set point shall be adjustable with a calibrated scale. Contacts shall be snap acting type. Switch enclosures shall be NEMA 4 for non-hazardous locations, and NEMA 7 or 9 for hazardous locations. All switches shall be voltage sensed from the BOP control system. All switches shall be electrically isolated from ground and from one another.

### (8) Local Indicators

#### a) Thermometers

Thermometers shall be the bimetallic, adjustable, "every-angle" types with minimum 4 ½ inch dials.

#### b) Pressure Gauges

Pressure gauges shall be of the bourdon tube type with solid front cases, 4 ½ inch dials, stainless steel movements and nylon bearings. Gauges shall have ½ inch NPT bottom connections.

#### c) Local Level Indicators (Gauge Glasses)

Tubular gauge glasses shall be used for low-pressure applications. All gauge glasses shall be equipped with gauge valves, including a safety ball check.

### (9) Control Valves

Control valves shall be used in on-off and modulating service. Globe valves shall be used extensively in water, gas, and oil service with butterfly and ball valves used in limited applications, typically low pressure and temperature water service.

Pressure retaining component and valve trim Materials shall be selected based on process conditions such as type of fluid, static and differential pressures, and temperature.

In general, control valves designed to fail closed shall have ANSI class IV leakage ratings.

Each control valve shall be provided with accessories such as handwheels, filter regulators, solenoid pilot valves, and limit switches as applicable.

### (10) Tubing Systems



**DERWICK ASSOCIATES CORP.**

## **Frame 7EA Power Project Technical Scope Document**

Instrument, control, and sampling tubing systems shall be designed, fabricated, and tested in accordance with ASME B31.1.

Primary process instrument and sampling tubing shall be ASTM A213 Type 316 SS, 3/8 .049 standard wall or 1/2 inch .065 standard wall, respectively.

Pressure type instruments shall have associated isolation and test valves or combination two-valve isolation/test manifolds. Differential pressure type instruments shall have associated pairs of isolation and test valves plus an equalizing valve or combination five-valve isolation/test/equalizing manifolds. Blowdown valves shall be provided for each remote device as required.

### **3.4 Civil / Structural**

3.4.1 Site Preparation – The Contractor will perform removal as required of any existing buildings, structures, and underground piping systems on the project site.

3.4.2 Site Grading – The Contractor will provide all rough and final grading. Grades will be established to minimize the amount of earthwork required to construct the facilities. All areas disturbed during construction shall be graded to a smooth surface and covered with appropriate material as conditions require. Finish grading shall be performed to conform to the finished design elevations for surface drainage and to prepare the areas to receive the specified surface finishes.

3.4.3 Storm Water Drainage – The Contractor will design and provide storm water drainage for rainwater on the site. Storm water will be managed through use of swales, ditches, culverts and site grading to drainage locations within the facility. All rain water collected from active areas that can potentially be contaminated by oil shall be routed through an oil/water separator.

3.4.4 Process Waste Water – The Contractor shall route all process waste water to the oily water separator. The process waste water shall include:

- GSU and Aux Transformer Containments
- Frame 7EA Water Wash
- Oily Water Separator Waste Water
- Liquid Fuel Storage

Discharge of waste water shall be routed to a waste water tank for disposal by Interconnect Piping to Pipeline Header System Adjacent to Plant.

3.4.5 Plant Gravel, Roads, Paving and Parking – The Contractor will provide for plant gravel, roads and parking as shown on the Plot Plan.

3.4.6 Concrete



DERWICK ASSOCIATES CORP.

Contractor to provide concrete foundations in accordance with the following section:

Contractor to provide design of foundations and anchor bolts.

(1) Codes

Design of structural concrete will be in accordance with the American Concrete Institute (ACI) – “Building Code Requirements for Structural Concrete,” ACI 318, latest edition, and the UBC Code.

(2) Materials

Minimum concrete strength classes for various structures will be as stated.  
Reinforcing bars will conform to ASTM A615, Grade C.

Welded wire fabric will conform to ASTM A185, using bright basic wire conforming to ASTM A82. Wires gauge No. 11 or smaller shall be galvanized.

Spiral reinforcement will conform to ASTM A82.

(3) Placing of Concrete

Contractor will adhere to good and accepted practices in placing concrete generally as outlined:

Placing Concrete:

- Conform to ACI
- Place within 60 minutes after mixing, except site weather conditions may extend the period to 90 minutes (maximum).
- Place in horizontal layers not exceeding 20 inches.
- Vibrate to produce solid mass without honeycomb or surface air bubbles.

Curing Concrete:

- Unless specified to be moist cured, cure with liquid membrane-forming compound conforming to ASTM C309, Type I. Apply according to manufacturers recommendations.
- Apply curing compound to all exposed surfaces immediately after removing from or after finishing concrete.
- Keep formwork wet until stripped.
- Moist curing shall be used for surfaces that will receive a separate finish or coating.



**DERWICK ASSOCIATES CORP.**

(4) Testing

Contractor will test concrete and make test cylinders conforming to ASTM C31, C143, and C172. Owner will make a minimum of four test cylinders for each 150 cubic yards of concrete or fraction thereof, or every 5000 square feet of surface area for slabs and walls, for each day concrete is placed.

(5) Equipment Foundations

The types of foundations and piling, if required and allowable bearing values for soil and rock, will be as recommended by Contractor's Geotechnical Engineer in accordance with the Contractor-provided final geotechnical report.

Design of foundations will be in accordance with ACI 318 and the UBC.

(6) Containment Basins

Containment basins will be provided around transformers and other equipment, which contain oil in case of rupture, spill, or leak. The basins shall be designed in accordance with the NFPA 850 and Factory Manual recommendations.

### 3.4.7 Structural Steel

Contractor will furnish and install necessary structural steel including:

- 1) Piping racks and supports
- 2) Cable Tray supports
- 3) Walkways and platforms
- 4) Grating and supports

Pipe racks and cable tray supports may be a combination of concrete and structural steel. Structural design will be in accordance with the applicable codes and standards.

(1) Wind and Seismic Loads

All structures, tanks, equipment anchorage, and piping and cable tray supports will be designed and installed to resist code-specified wind and seismic loads. Pipe supports shall also be designed for reactions due to pipe stress analyses and support degree of fixity.

(2) Codes

Design of structural and miscellaneous steel shall be in accordance with the 1997 Uniform Building Code (UBC), the American Institute of Steel Construction (AISC) "Specification for Structural Steel Buildings," latest edition and other applicable Codes and Standards in accordance with Section 2.4 of the TSD.



DERWICK ASSOCIATES CORP.

### **3.5 Plant Buildings**

A Climatized Control and Office Building is to be furnished by Contractor for the DCS System.

### **3.6 Plant Lighting**

#### **3.6.1 Area Lighting – Owner to Provide**

#### **3.6.2 Building Lighting**

Types of building interior lighting fixtures are outlined as follows:

- Control Room – Fluorescent

### **3.7 Telephone and Paging**

Furnish and install a complete key type telephone system including but not limited to the following: incoming Owner lines, and incoming trunk line from the local phone company suitable for the service but not less than eight (8) pairs. Surge arrestors, punch-down blocks for all circuits, and speakers for paging are included. Analog key phones in each electrical equipment room, office, control room, and the GTG control building. Provide two (2) phone lines, one (1) fax line, a phone jack for computer internet connection, and network connections for three (3) computers in the control room. Surge arrestor equipment will be installed in out-lying buildings. Furnish and install all grounding. Furnish and install all telephone equipment including wall jacks, key type desk phones and wall phones, (total not to exceed 32) racks, panels, raceway, terminal blocks, cable, plugs, labels, and patch cords.

The system will allow paging from any telephone. The system will be designed so that paging can be heard from anywhere in the plant. Loud speakers to be installed on area lighting poles or other elevated structures per detail design.



**DERWICK ASSOCIATES CORP.**

## **Frame 7EA Power Project Technical Scope Document**

### **Section 4.0 Design Basis and Interconnect Points**

#### **4.1 Design Basis**

##### **Design Conditions**

Site Elevation	TBD
Air Temperature, High	TBD
Air Temperature, Low	TBD
Design Temperature	TBD
Relative Humidity	TBD
Wind Speed	TBD
Gas Turbine Power	TBD
GTG Fuel Consumption Rate	42,000 MCFD Natural Gas
GTG Liquid Fuel Consumption Rate	260 gpm
High Voltage Interconnect	230 KV
Demin Water Storage	TBD
Instrument Air System	TBD
Waste Oil Storage	TBD
Waste Water Storage	TBD
Raw Water Storage	TBD
Treated Fuel Storage	TBD

#### **4.2 Interconnect Points**

Natural Gas at min. 450 psig	Owner to provide interconnection point outside of the Plant Battery Limits.
Treated Liquid Fuel	Owner to provide pipeline and measurement at Plant Battery limits
Plant Waste Water	Plant Battery Limits.
Plant Waste Oil	Plant Waste Oil Tank.
230 KV	Connection to Utility via dead end structure inside Substation.
Telephone	Plant Battery Limits.
Raw Water Supply	Plant Battery Limits.
Sanitary Sewer	Existing Plant Septic System at boundary
Raw/Firewater Supply	Plant Battery Limits by Owner





**DERWICK ASSOCIATES CORP.**

---

## **Section 5.0 Plant Performance**

### **5.1 Expected Design Performance**

See the attached Performance Curves for the GE Model 7121 Frame 7EA Gas Turbine Generator.

# General Electric Model PG7121EA Gas Turbine

## Estimated Performance - Configuration: DLN Combustor

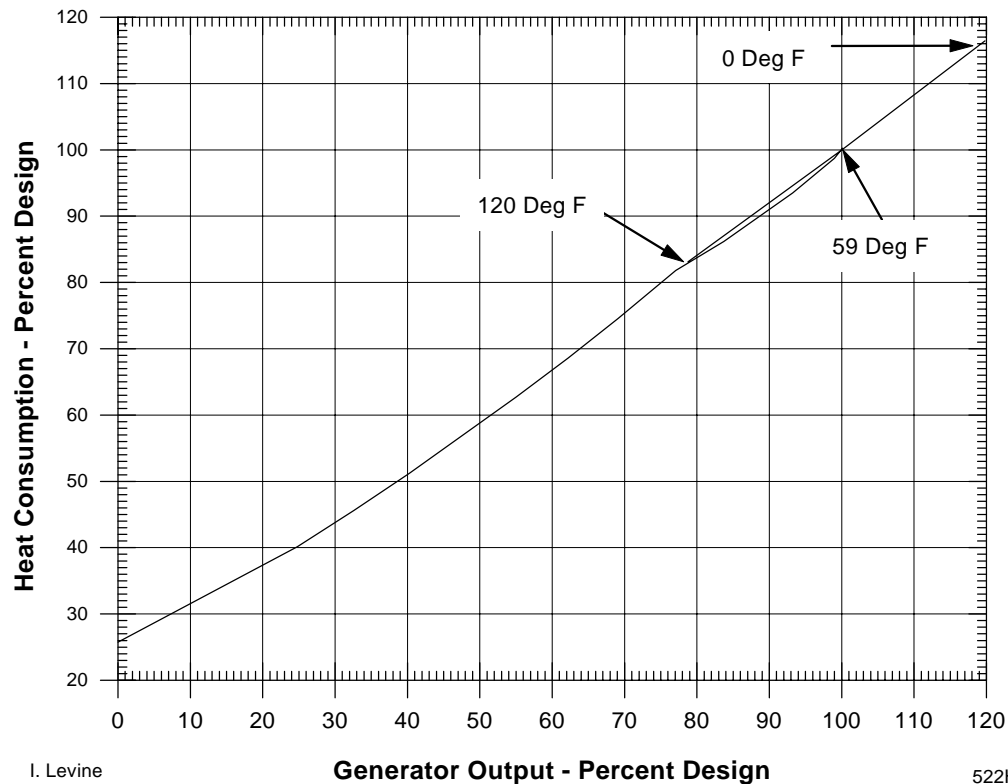
Compressor Inlet Conditions 59 F (15 C), 60% Relative Humidity  
Atmospheric Pressure 14.7 psia (1.013 bar)

Fuel:			Natural Gas	Distillate
Design Output	kW		84360	82890
Design Heat Rate (LHV)	Btu/kWh (kJ/kWh)		10480 (11050)	10570 (11150)
Design Heat Cons (LHV)	Btu/h (kJ/h)x10 <sup>6</sup>		884.1 (932.5)	876.1 (924.2)
Design Exhaust Flow	lb/h (kg/h)x10 <sup>3</sup>		2361 (1071)	2368 (1074)
Exhaust Temperature	deg. F (deg. C)		998 (536.7)	999 (537.2)
Load			Base	Base

### Notes:

- Altitude correction on curve 416HA662 Rev A.
- Ambient temperature correction on curve 522HA283 Rev 2.
- Effect of modulating IGV's on exhaust temperature and flow on curve 522HA284 Rev 2.
- Humidity effects on curve 498HA697 Rev. B - all performance calculated with a constant specific humidity of .0064 or less as not to exceed 100% relative humidity.
- Plant Performance is measured at the generator terminals and includes allowances for the effects of inlet bleed heating, exitation power, shaft driven auxiliaries, and 3.5 in H<sub>2</sub>O (7.29 mbar) inlet and 5.5 in H<sub>2</sub>O (13.70 mbar) exhaust pressure drops and a DLN Combustor.
- Additional inlet and exhaust pressure loss effects:

	% Effect on		Effect on
	Output	Heat Rate	Exhaust Temp.
4 in Water (10.0 mbar) inlet	-1.40	0.42	1.9F (1.0C)
4 in Water (10.0 mbar) exhaust	-0.42	0.40	1.8F (1.0C)



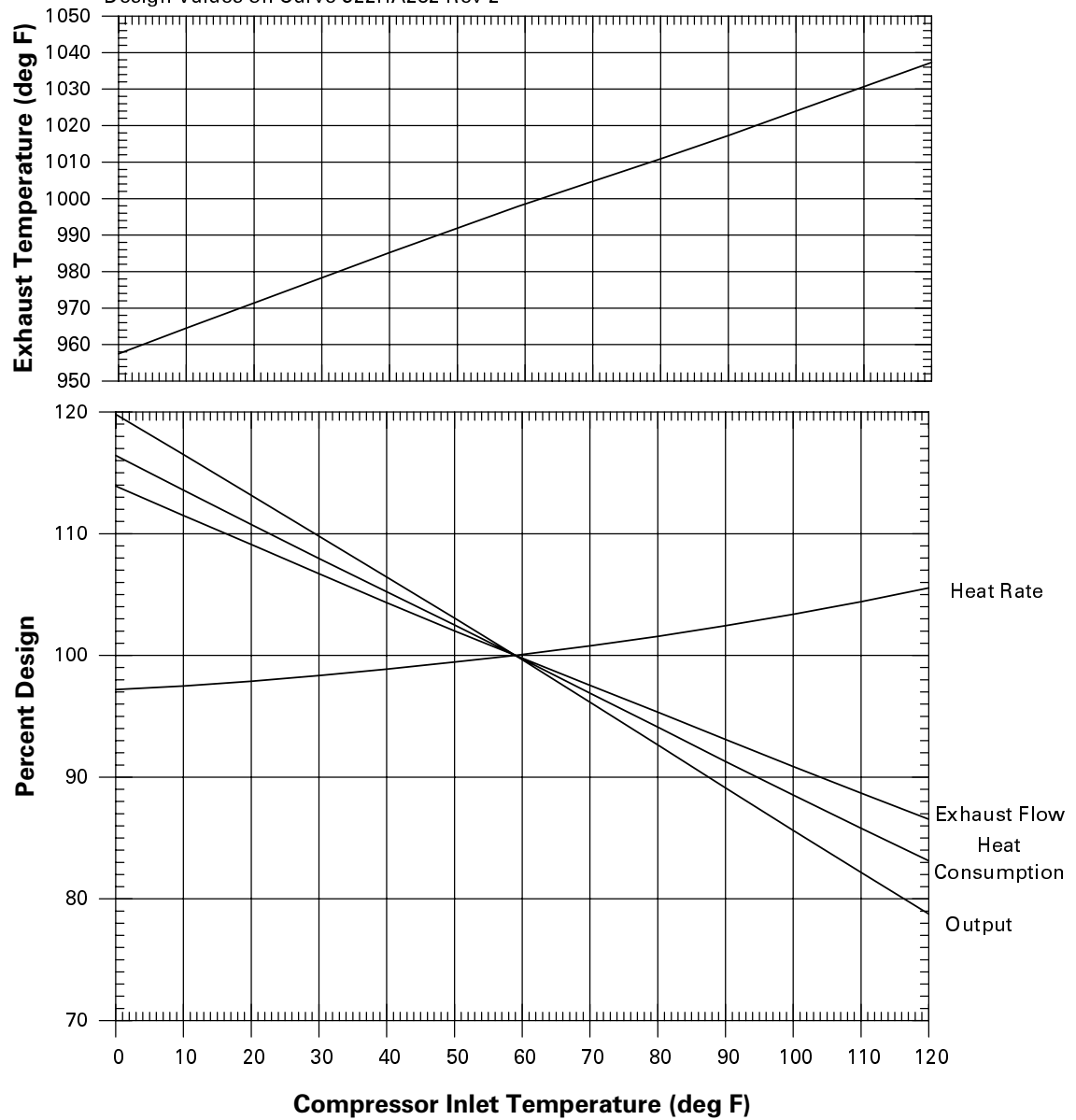
# GENERAL ELECTRIC MODEL PG7121EA GAS TURBINE

Effect of Compressor Inlet Temperature on  
Output, Heat Rate, Heat Consumption, Exhaust Flow  
And Exhaust Temperature at Base Load and 100% speed.

Configuration: DLN Combustor

Fuel: Natural Gas

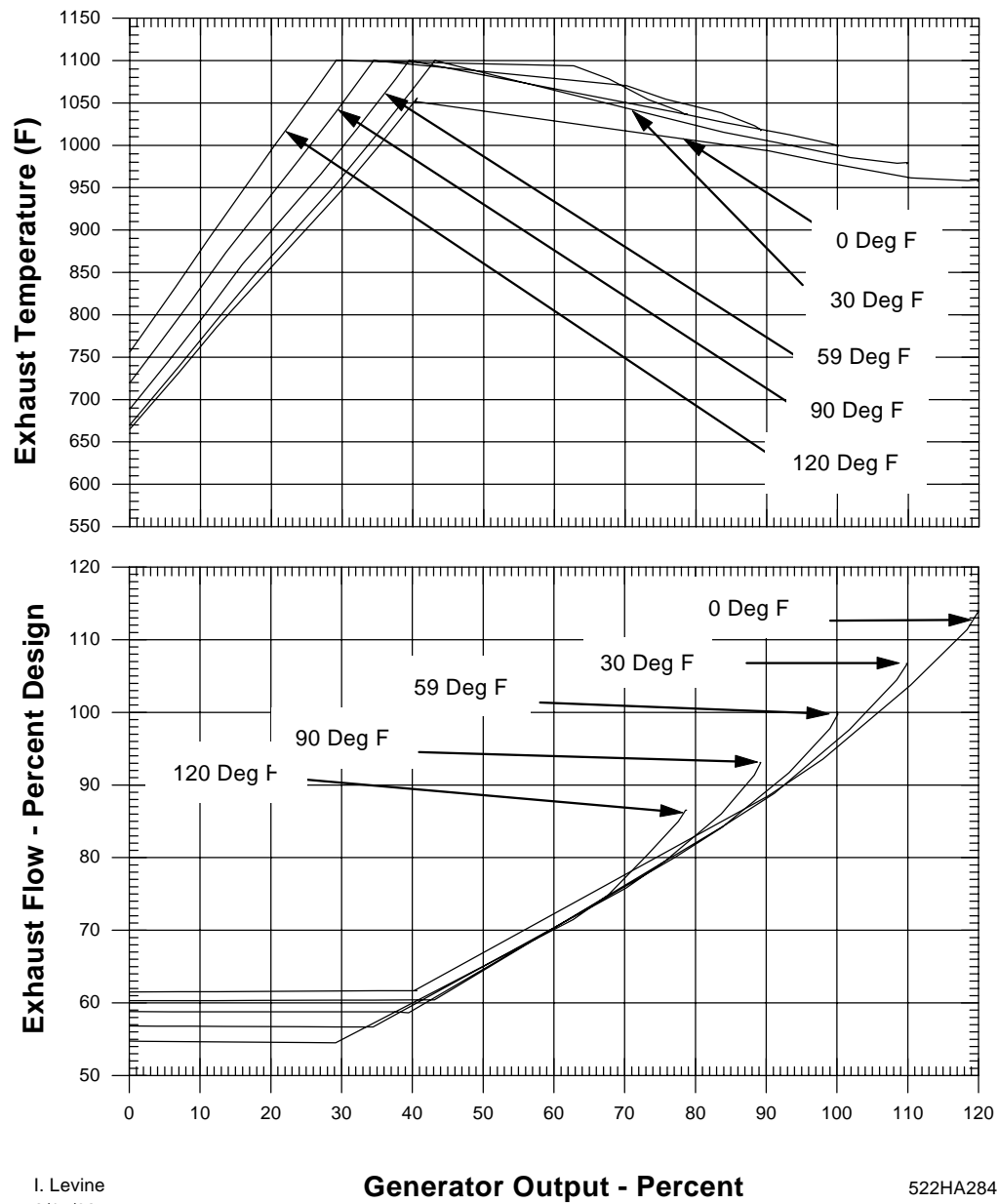
Design Values on Curve 522HA282 Rev 2



# GENERAL ELECTRIC MODEL PG7121EA GAS TURBINE

## Effect of Inlet Guide Vane on Exhaust Flow and Temperature As a Function of Output and Compressor Inlet Temperature

Fuel: Natural Gas  
Design Values on Curve 522HA282 Rev 2

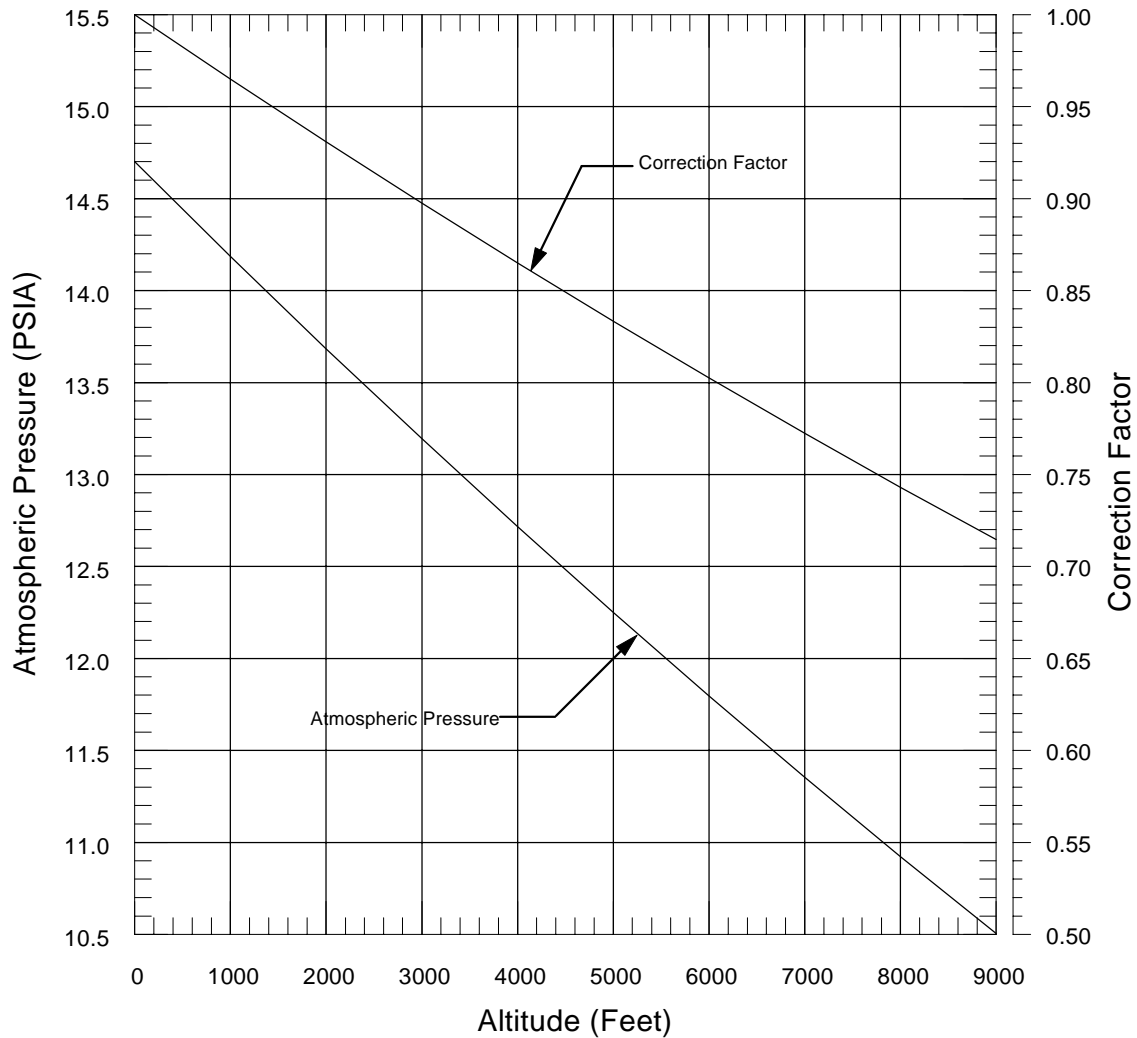


# GENERAL ELECTRIC GAS TURBINE ALTITUDE CORRECTION CURVE

ALTITUDE VS ATMOSPHERIC PRESSURE  
AND  
ALTITUDE VS CORRECTION FACTOR  
FOR GASTURBINE OUTPUT, FUEL CONSUMPTION, AND EXHAUST FLOW

NOTES:

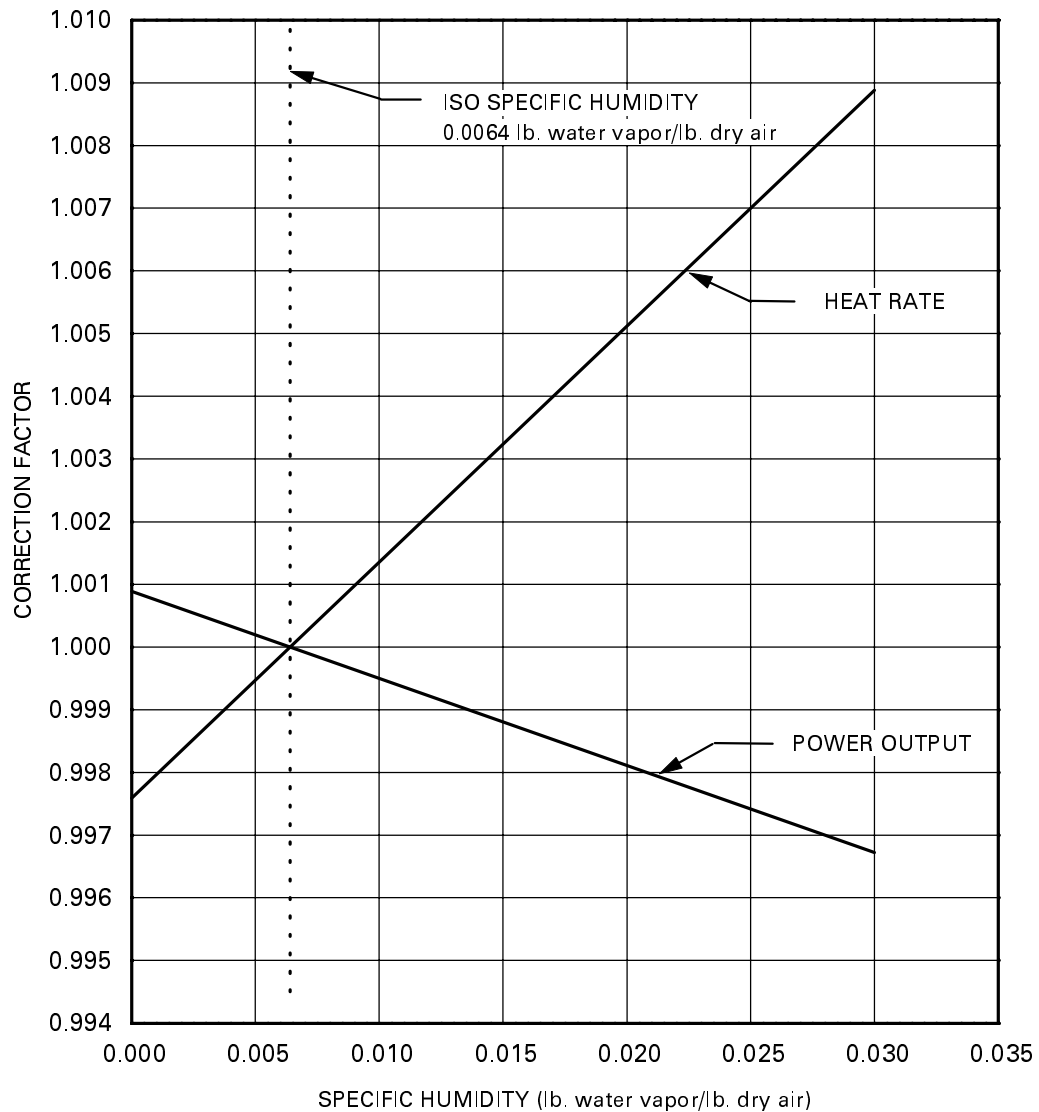
1. Exhaust Temperature, Heat Rate, and Thermal Efficiency are not affected by altitude.
2. Correction Factor =  $P(\text{atm})/14.7$



## General Electric MS6001, MS7001 And MS9001 Gas Turbines

Corrections To Output And Heat Rate  
For Non-Iso Specific Humidity Conditions

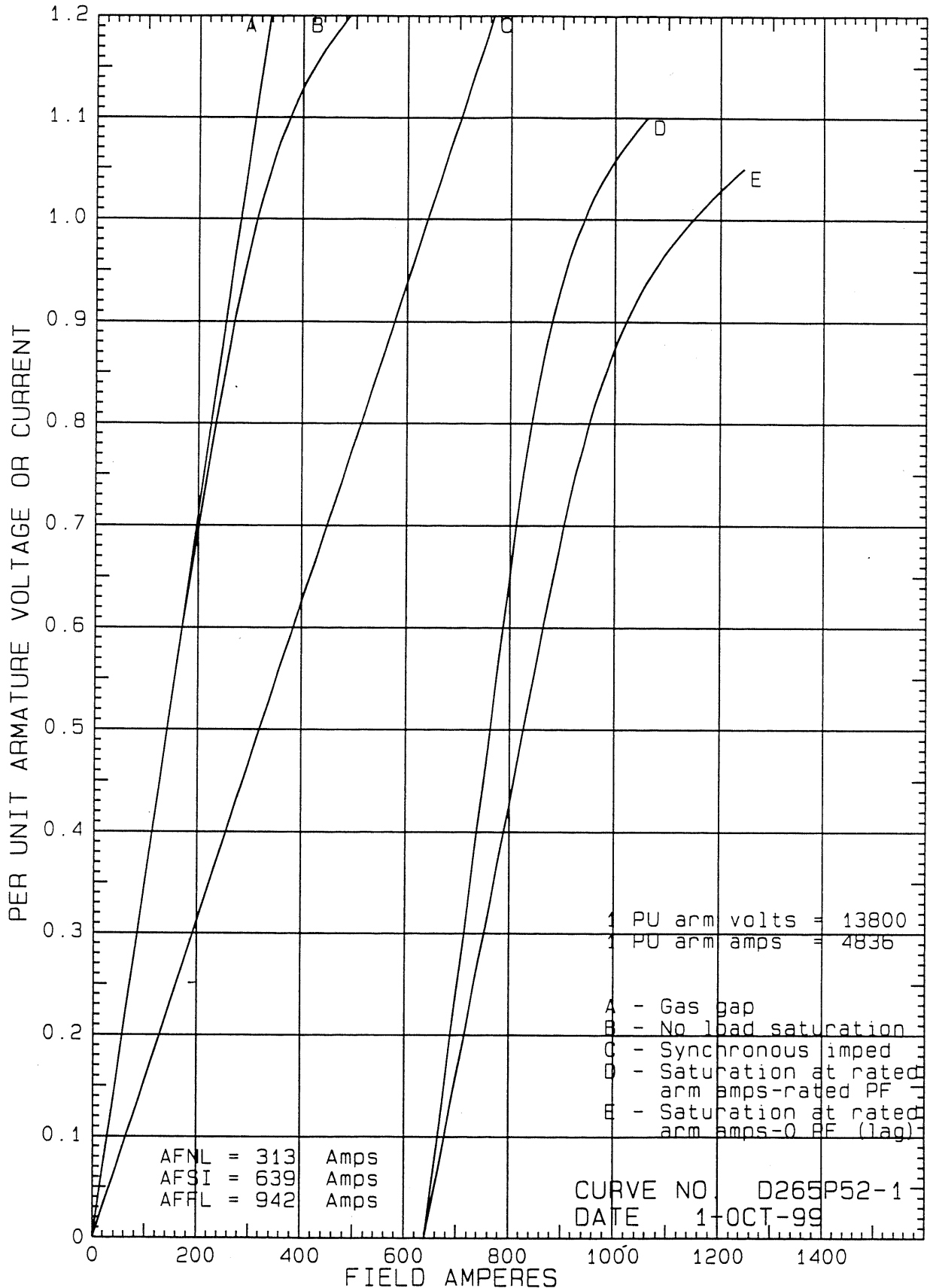
For Operation At Base Load On Exhaust  
Temperature Control Curve



# ESTIMATED SATURATION AND SYNCHRONOUS IMPEDANCE CURVES

115600 KVA - 3600 RPM - 13800 VOLTS - 0.85 PF

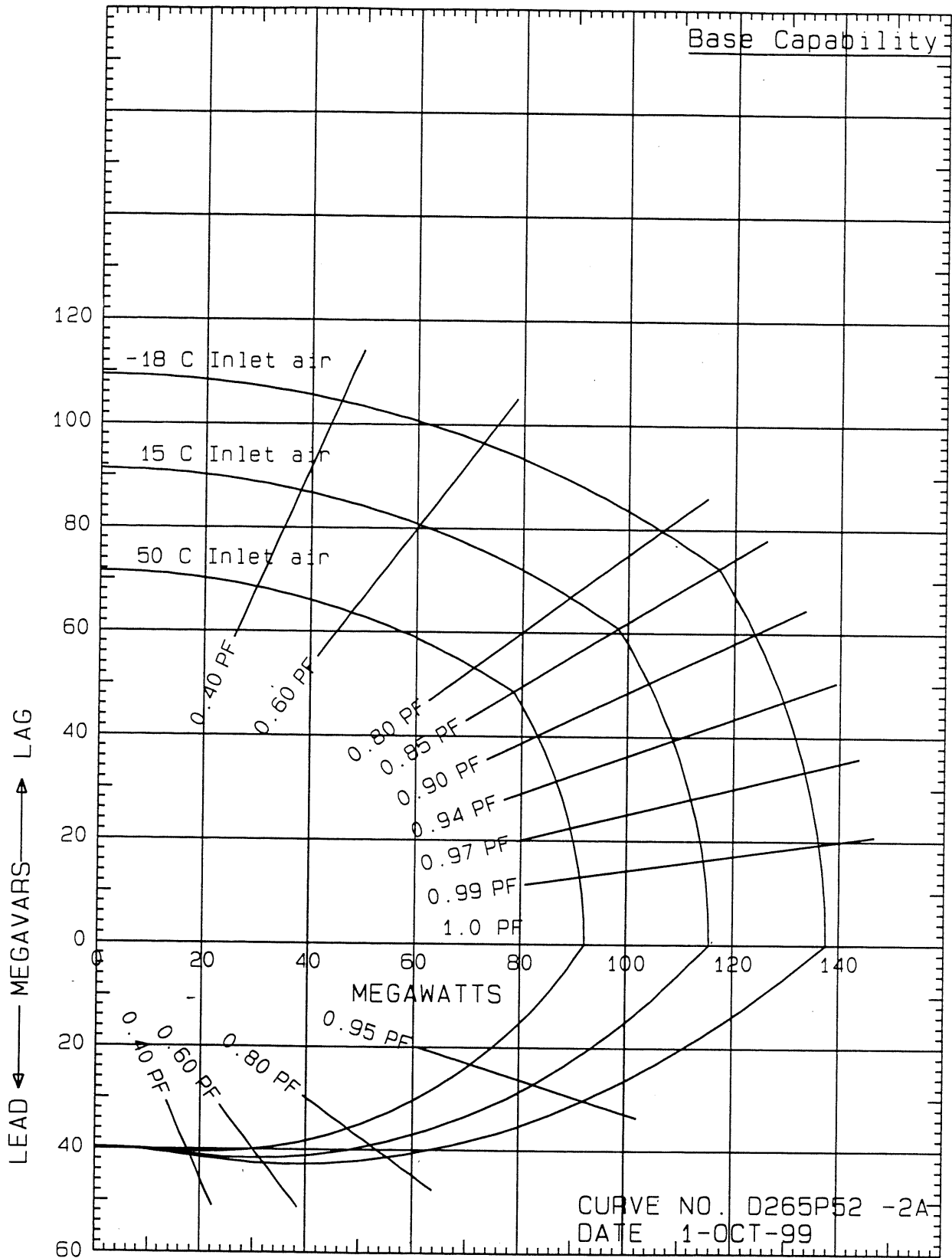
300 FLD VOLTS - 15 C INLET AIR - 0 FT ALT



# ESTIMATED REACTIVE CAPABILITY CURVES

115600 KVA - 3600 RPM - 13800 VOLTS - 0.85 PF

300 FLD VOLTS - 15 C INLET AIR - 0 FT ALT

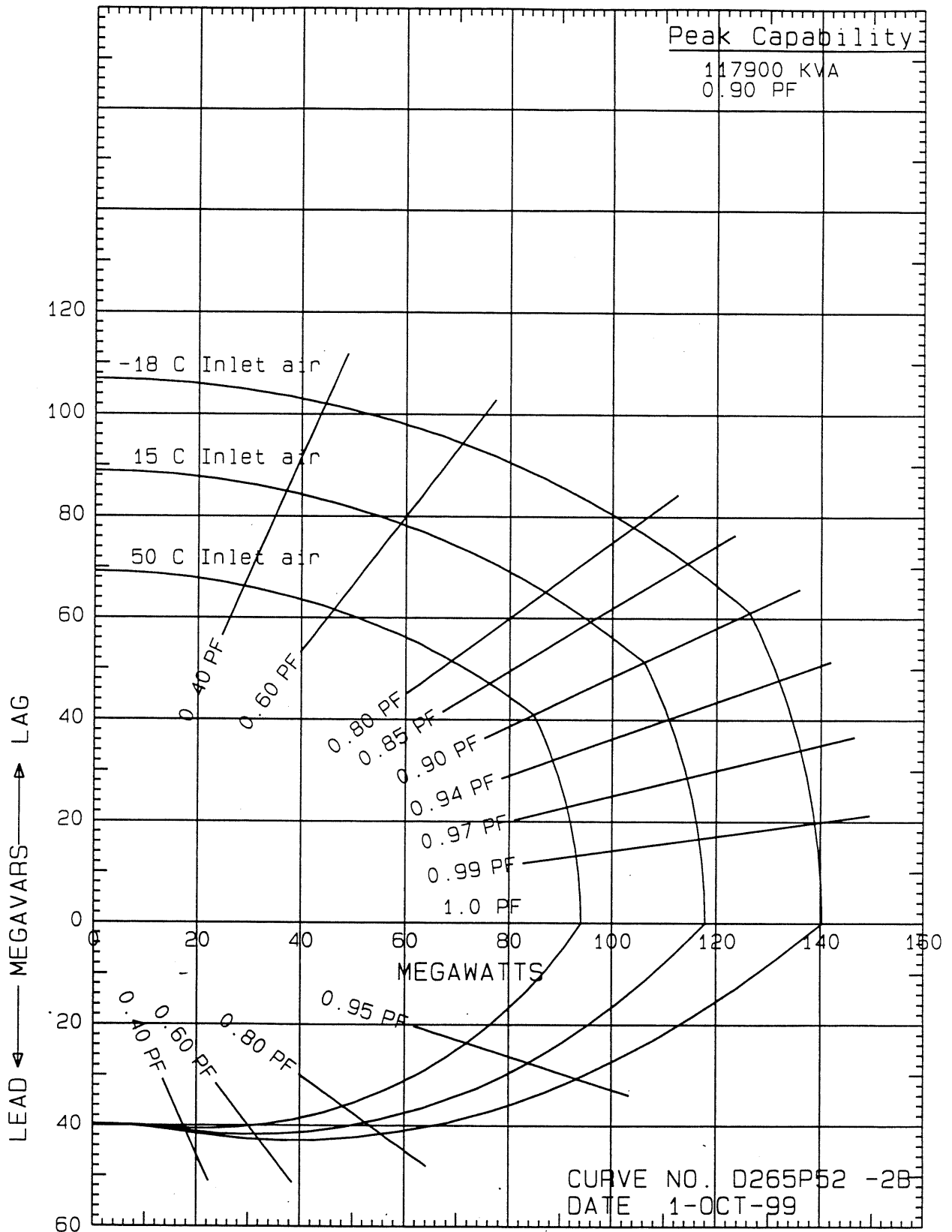




# ESTIMATED REACTIVE CAPABILITY CURVES

115600 KVA - 3600 RPM - 13800 VOLTS - 0.85 PF

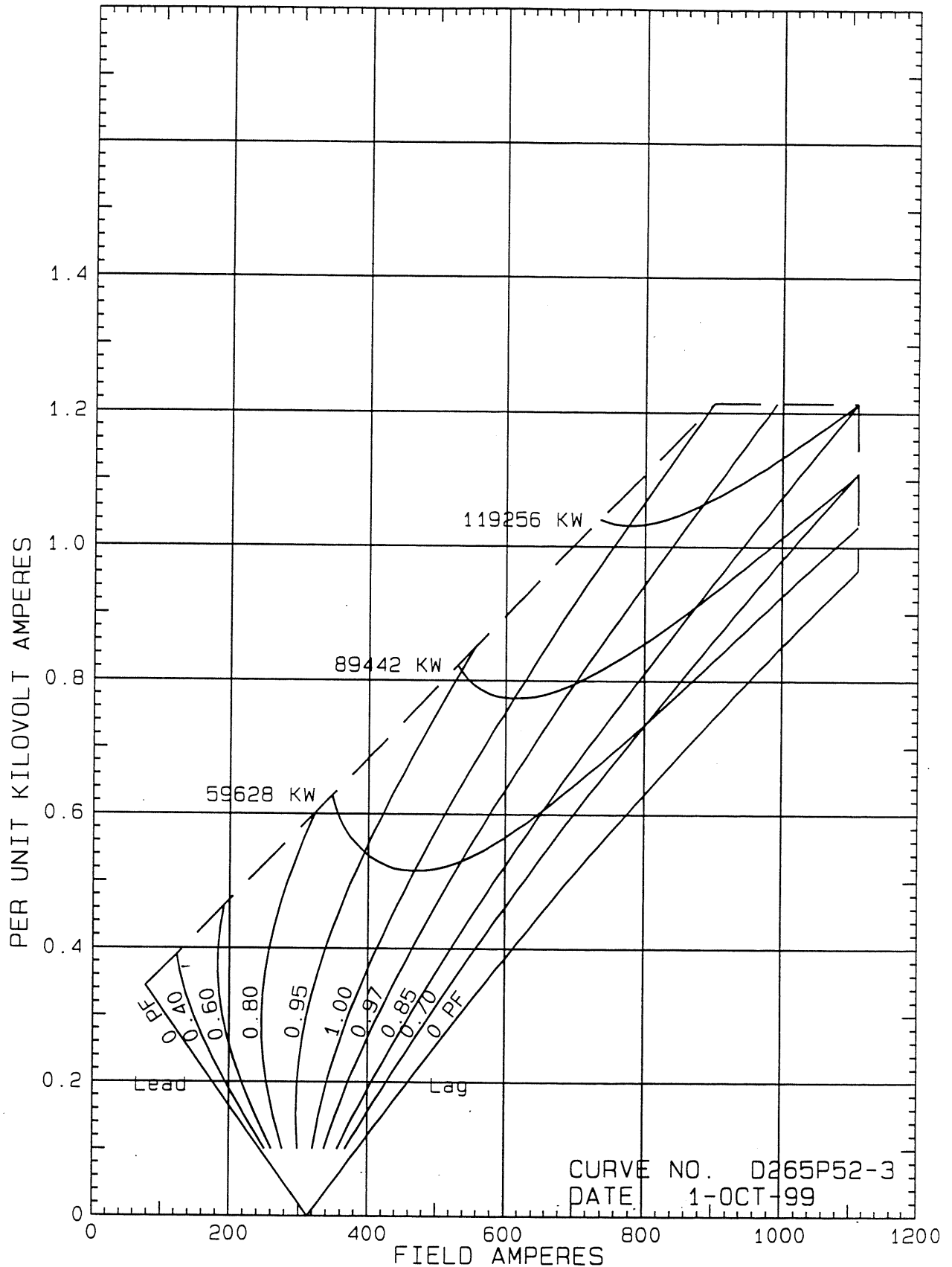
300 FLD VOLTS - 15 C INLET AIR - 0 FT ALT



# ESTIMATED EXCITATION V CURVES

115600 KVA - 3600 RPM - 13800 VOLTS - 0.85 PF

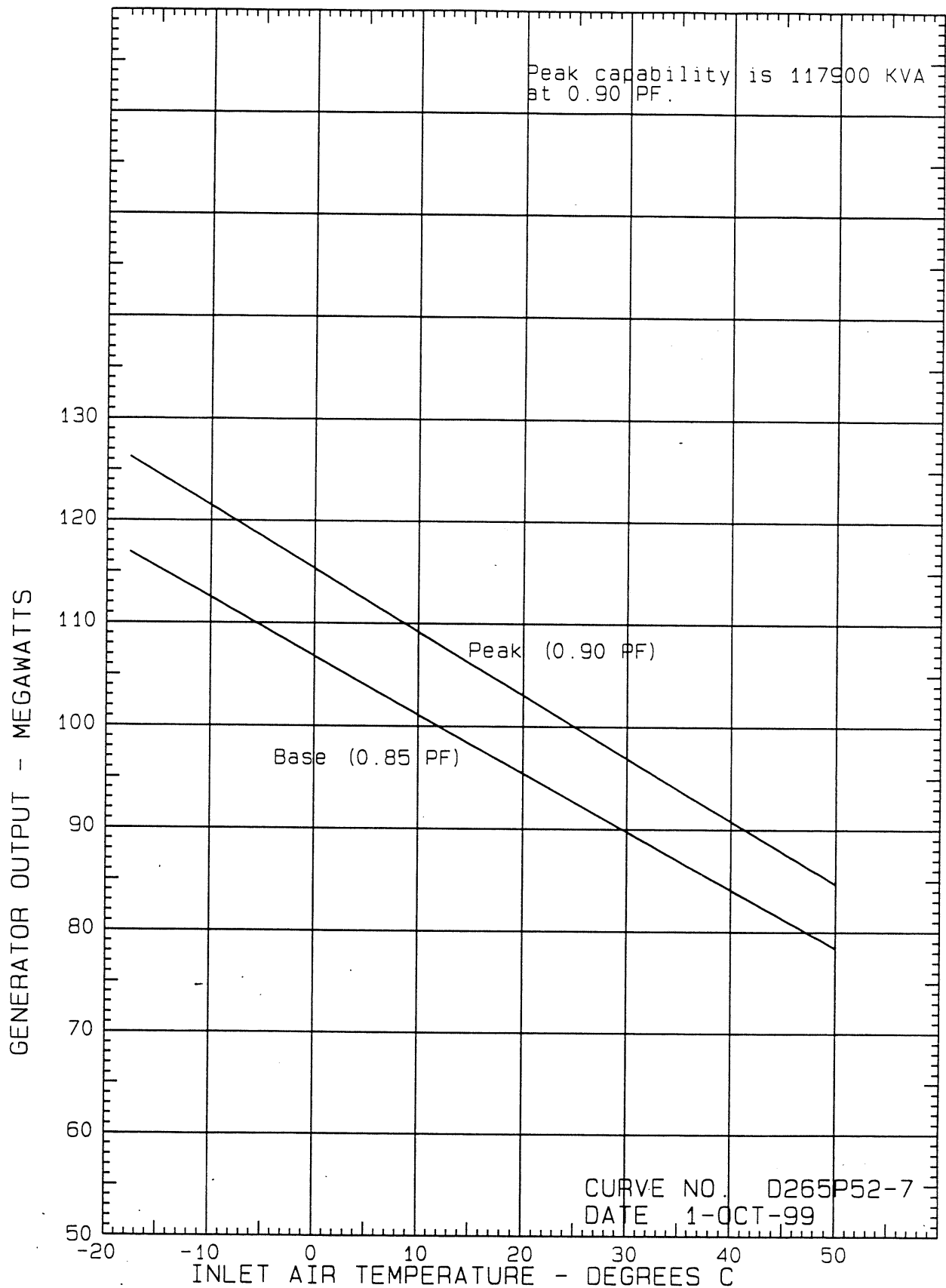
300 FLD VOLTS - 15 C INLET AIR - 0 FT ALT



# GENERATOR OUTPUT AS A FUNCTION OF INLET AIR TEMPERATURE

115600 KVA - 3600 RPM - 13800 VOLTS - 0.85 PF

300 FLD VOLTS - 15 C INLET AIR - 0 FT ALT



---

## **6.0 Plant and Equipment Warranties**

### **6.1 Equipment Warranties**

Contractor will obtain from all new equipment vendors their warranty on the material and equipment provided. Derwick warranties will be for a term of 12 months following the commercial operation date. The warranty for each component will include replacement of the item as well as the Contract labor cost to replace and install for those items not considered a normal maintenance replacement.

This vendor warranty information will be assembled and packaged into a Warranty Manual. The information will be indexed and cross referenced by vendor, component description, model and/or SN, and supply contact (telephone, email and address). A Warranty Manual will be provided to the Owners for use by the operator.

### **6.2 Plant Warranty**

As part of this warranty, Contractor agrees to provide for a period of six months following the commercial operation of the facility, a person responsible for administering the plant and equipment warranties. This person will be an employee of Derwick. He will be available, on call, to manage the warranty items.



**DERWICK ASSOCIATES CORP.**

---

## **Section 7.0      Project Management and Organization**

### **7.1      Project Management Execution**

#### **7.1.1      Project Management Team (Typical)**

The Contractor will assemble a well qualified and experienced team of individuals who have worked together on many previous projects.

The team will be comprised of:

- Project Manager
- Administration Manager
- Project Technical Consultants
- Construction Manager
- Purchasing / Expediter
- Scheduling
- QA/QC
- Project Engineering Manager
- Site Erection
- Commissioning / Start up Managers
  - Mechanical
  - Electrical
- Mechanical Construction Superintendent
- Electrical Construction Superintendent
- Training

The team as outlined above has worked together on many gas turbine generator power plants within the US as well as internationally. They have successfully completed a number of "Fast Track" projects internationally.

#### **7.1.2      Project Manuals**

One of the first tasks to be initiated is the preparation of the project specific project manuals. These manuals are listed:

- Project Procedures
- Project Implementation
- Project Engineering Calculations
- Project Warranties



**DERWICK ASSOCIATES CORP.**

- QA/QC
- Safety
- Training
- Operation and Maintenance
- Commissioning, Start Up, and Turnover
- Project Performance Tests

### **7.1.3 Project Schedule**

Along with the commencement of preparation of the project manuals, the detailed project schedule will be started. This detailed schedule will be developed utilizing Microsoft Project. The project schedule will be a living document which will be continually updated by a full time assigned scheduler for the life of the project. The proposed project schedule is included in Section 8.0.

### **7.1.4 Project Engineering**

Preliminary conceptual engineering has been developed during the proposal phase which consists of:

- General Arrangement Plot Plan
- Process Flow Diagram
- One Line Diagrams

The conceptual drawings listed above are immediately completed after project Notice to Proceed. This entails updating the various drawings based on final agreed upon items with the Owner and/or Owner's Engineer. The Process Flow Diagram is completed with the latest heat and material balance. The One Line Diagrams are further developed to reflect loads, breaker / fuse sizing, DL power, etc. The Control System Drawing is likewise further completed reflecting agreed upon HMI's, printers, Balance of Plant Equipment PLC's, etc.

The conceptual engineering is completed utilizing the project technical consultants (responsible for proposal preparation) and the detailed engineering team to guarantee a smooth hand over to the detailed engineering phase.

During the conceptual engineering phase, specifications are finalized for all engineered equipment to be purchased. On a "Fast Track" project most of the engineered equipment has been preliminarily specified with only final checks and agreed upon modifications made.

Detailed engineering will be completed utilizing the conceptual drawings previously described and with Owner approval. This detailed engineering will include: engineering protocol for drawings and specification.

As-built drawings will be completed upon completion of the installation phase of the project.

#### **7.1.5 Owner Approval**

It is proposed that three approval steps be in place for the engineering phase of the project. These steps would be 30%, 60%, and 90%. The Owner or Owner's Representative could travel to the Contractor or vice versa at the Owner's request.

#### **7.1.6 Project Procurement**

Major engineered equipment which has been specified during the proposal and configuration phases of the project are submitted on the agreed upon approval process and when approved will be purchased.

The Balance of Plant Equipment and materials (normally short delivery) will be itemized and listed during detailed engineering. A decision will be made as to who will furnish (Contractor or Subcontractor) based on job conditions, locations, etc.

#### **7.1.7 Construction Phase On Site**

The project management team will move to the site for the construction phase of the project. This phase is further described as follows:

##### **1. Mobilization**

A mobilization and construction lay down plan will have been prepared as part of the Project Implementation Manual. This would include setting up the normal required items.

- Construction offices
- Site utilities
- Secure and non-secure lay down areas
- Communications



**DERWICK ASSOCIATES CORP.**

**Frame 7EA Power Project  
Technical Scope Document**

- 
- Project management housing, transportation, food, etc.
  - Arrangements for major equipment rental
  - Surveys, soil tests, etc.





**DERWICK ASSOCIATES CORP.**

**2. Project Construction**

Project construction will be carried out utilizing local subcontractors and materials where feasible. Contractor will furnish construction management and detailed supervision of all disciplines.

**3. Commissioning and Turnover**

Commissioning and Turnover Manuals will be prepared for each discrete system making up the power plant. An experienced and knowledgeable commissioning and turnover team will be assigned under the supervision of a well qualified start-up manager. This team will commission on a "priority system" basis the various systems to provide for plant start up. It is desired that plant operation and maintenance personnel be involved to provide valuable hands on experience.

**4. Training**

Operation and maintenance training will be conducted in two phases:

- General Electric LM 6000 GTG equipment classroom at the site subject to plant operator preference.
- On site balance of plant operation and maintenance.

Formal training manuals will be prepared with formal on site training to be conducted.

**5. Plant and Performance Testing**

Plant and performance test documents will be prepared and submitted for approval. The formal tests will be conducted on an agreed time with the necessary Owner's Representatives attending.

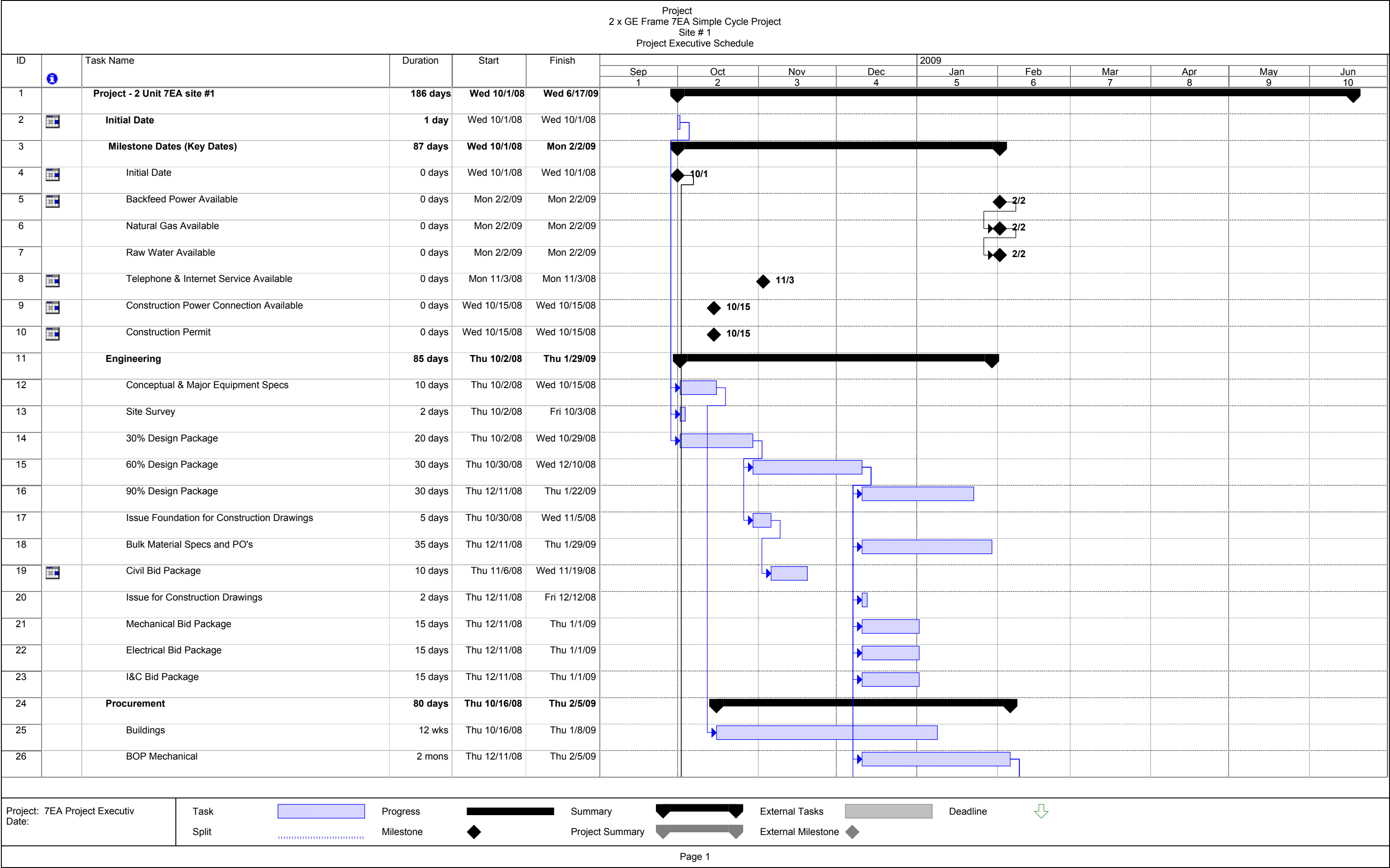


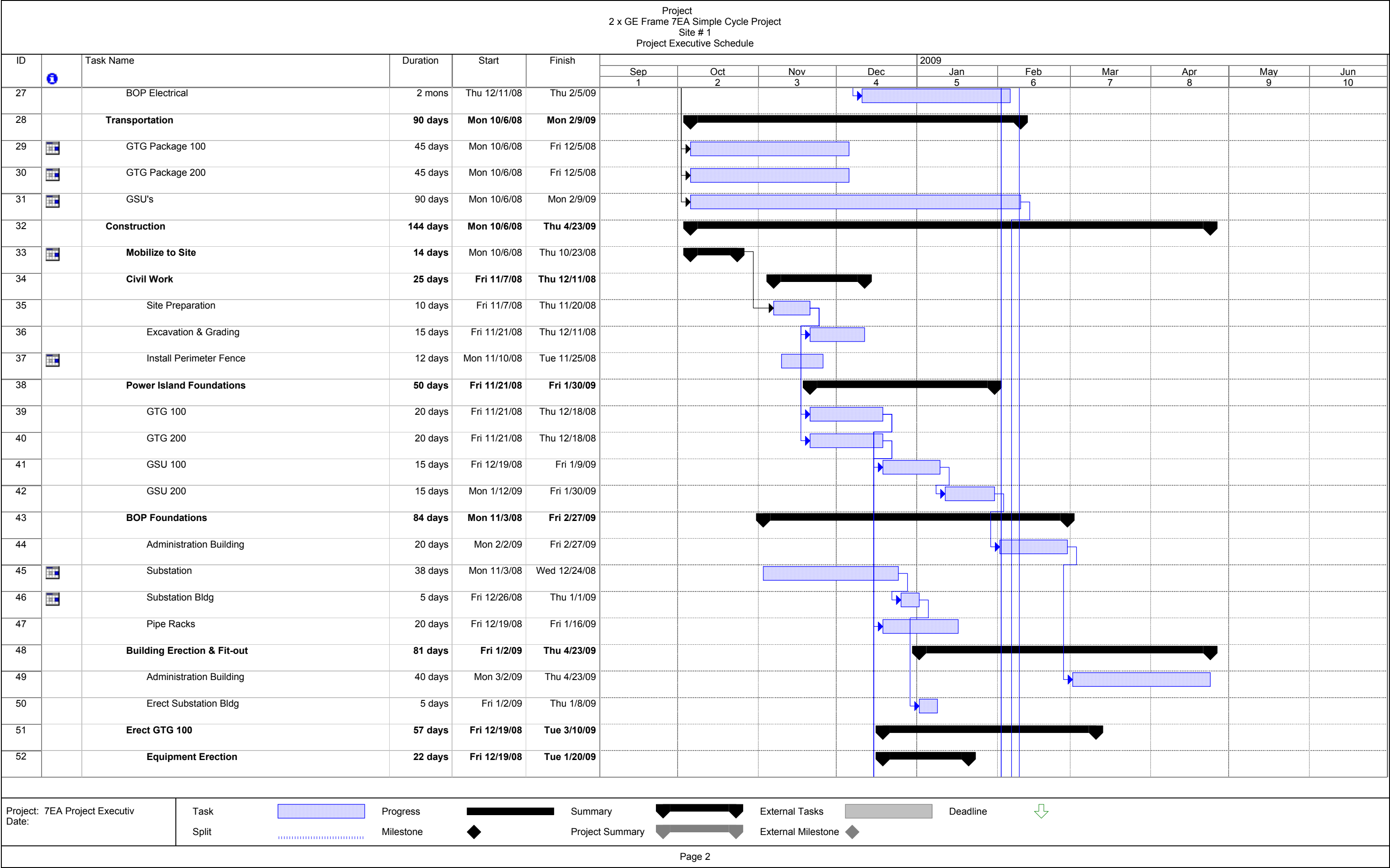
DERWICK ASSOCIATES CORP.

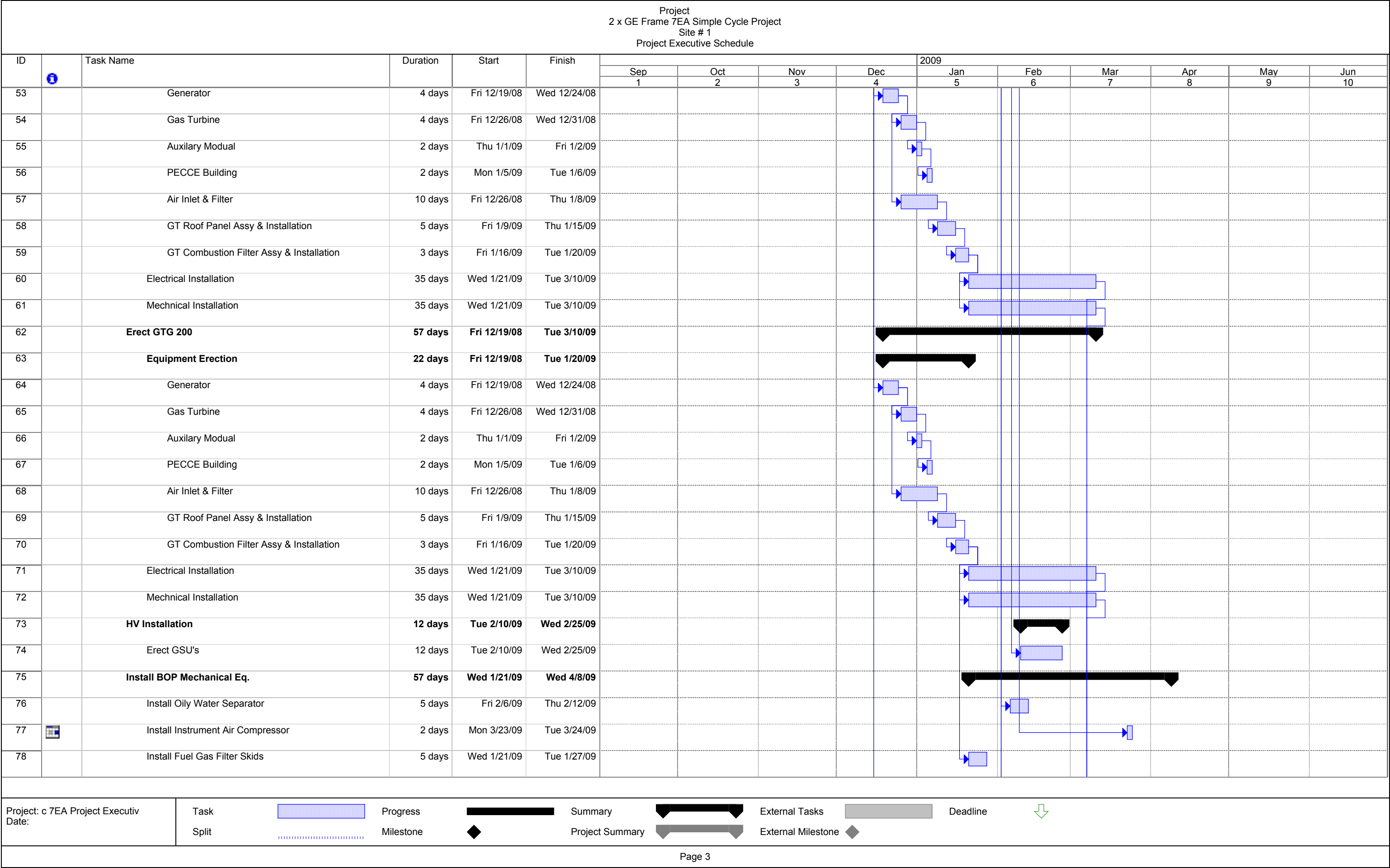
---

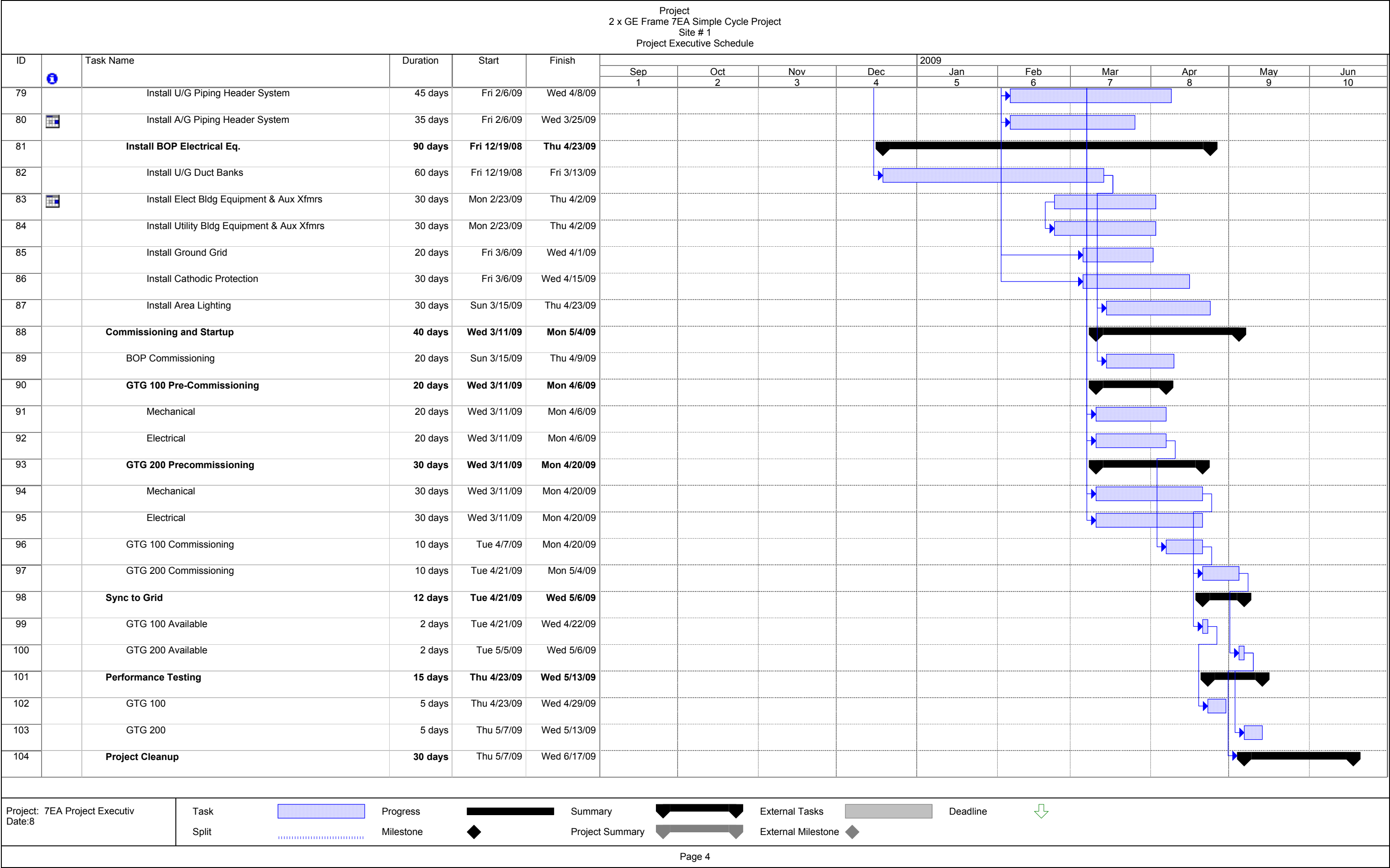
## **Section 8.0      Executive Project Schedule**

Please find on the following pages ProEnergy EPC Services' project schedule for the Frame 7EA Power Projects.











DERWICK ASSOCIATES CORP.

---

## Section 9.0 PROJECT QA/QC PLAN

### TABLE OF CONTENTS

- I. INTRODUCTION
- II. ORGANIZATION
- III. PLAN TASKS AND PROCEDURES
  - A. Construction Design
    - 1. Design Documentation Review-Drawings
    - 2. Design Documentation Review-Specifications
    - 3. Drawing Control
  - B. Subcontracted Design
  - C. Material Procurement
    - 1. Procurement Procedures
    - 2. Equipment / Material Specification Preparation
  - D. Test Plans
    - 1. Measurement and Test Equipment
    - 2. Documentation
    - 3. Definition of Test Types
  - E. Corrective Action
- IV. INSPECTION REQUIREMENTS
  - A. Responsibilities
  - B. Classification of Test
    - 1. Factory Testing
    - 2. Operational System Test (OST)
    - 3. Performance Tests
  - C. Test Documentation
- V. PROJECT SPECIFIC INSPECTIONS AND TESTS
  - A. Site Preparation
  - B. Ground Grid
  - C. Concrete Foundations, Walls, and Slabs
  - D. Electrical
  - E. Structural Steel
  - F. Piping and Welding
  - G. Instrumentation
  - H. Documentation
- VI. SHIPPING AND HANDLING

---

## **PART 1      PROJECT QA/QC PLAN**

### **I.      INTRODUCTION**

Our employees have over 40 years of history with EPC projects for the Power Generation industry. As a turnkey engineering and construction contractor, we have followed stringent quality guidelines throughout its history. The QA/QC Controls in place have been developed and fine tuned over these multiple and varied project experiences. The QA/QC plan that exists today is based upon experience in interpretation and application of codes and standards as well as practical knowledge learned in expeditiously bringing a project to successful completion.

The following sections will provide a detailed description of the Corporate Policy regarding Quality Assurance/Quality Control and a Project Specific Plan for the Quality Assurance/Quality Control management of the Power Project.

### **II.      ORGANIZATION**

The Quality Assurance Manager acts as the point-of-contact for any non-conformance reports and initiates corrective action as required. He/she ensures that required inspections, tests, evaluations, reviews, audits and all other quality control measures are performed as necessary to strictly adhere to the corporate-approved Quality Control and Assurance program plan. The Quality Assurance Manager is assisted by a team of inspectors who conduct all manners of inspections and tests required, ensuring that the installed system conforms to the approved drawings and specifications.

An organization chart is furnished which shows the organization of the Quality Control and Assurance Team by position, title and name. All quality control team personnel will be assigned based upon individual and collective expertise as related to the specific areas of quality control necessary to support the contract work effort.

### **III.      PLAN TASKS AND PROCEDURES**

#### **A.      Construction Design**

##### **1.      Design Documentation Review - Drawings**

Project Engineers are responsible for conceptualizing and engineering the project. To ensure that the design meets all requirements, inspections will be conducted throughout the design process. Prior to issuance of "Issue For Construction" package, all drawings will have the following signatures and dates.





DERWICK ASSOCIATES CORP.

Draftsman	Signature and Date in Drawn By Block
Checker	Signature and Date in Check Block
Project Engineer	Signature and Date in Design Block
Project Manager	Signature and Date in Project Manager Block
QA Manager	Signature and Date in QA Block

The Project Engineer responsible for the drawing design will initial his approval on all completed drawings. Fundamental configuration drawings ( i.e., PFD, P&ID, Electrical One-lines, and Control Configuration drawings) will undergo peer review. Selection of the peer reviewer will be made jointly by the Senior Engineering Manager and the QA/QC Manager. The Quality Assurance Manager will check the drawing for all necessary signatures and initials and will then sign his name and date. The Drawing Review Sheet will be filed by the Quality Assurance Manager as a permanent project record.

Changes to approved drawings require the same review process. Changed drawings will be issued as revisions and will be labeled as such.

**2. Design Documentation Review - Specifications**

A specification will be generated for each major piece of equipment to be purchased for this project. The Project Engineer responsible for the generation of each specification will initial the completed specification. Prior to each specification's attachment to a Request for Bid or a Purchase Requisition, this specification will undergo peer review by the Project Manager and the Engineering Manager. The Specification will then be passed to the QA/QC Manager for his review and will become a permanent part of the project record.

**3. Drawing Control**

A Master Drawing Index of all drawings will be maintained. The index will be updated as drawing changes occur and will reflect the current status of each drawing. Only the latest applicable drawings, specifications, instructions and authorized changes thereto, will be issued for manufacturing, construction, inspection and testing. Reproducible copies or computer disk files of final revision levels of a drawing will be maintained for record.

**B. Subcontracted Design**

The same approval and quality assurance procedures to which own design work is subjected will also be applied to all design work subcontracted to an outside source. Drawings and other design documents will be reviewed and examined for compliance with both the technical and format requirements of the contract specifications.



DERWICK ASSOCIATES CORP.

## **C. Material Procurement**

Responsibility for procurement of various equipment and supplies will be clearly defined prior to the initiation of any procurement. Purchasing Manager and staff will directly monitor all procurement efforts of major equipment under their immediate control.

Balance of Plant purchasing, i.e., Buildings, Mechanical, Electrical (conduit, fittings and wire), and Area Lighting will be the primary responsibility of the various subcontractors. Some of the project tasks will be purchased as a sub-system or system from different vendors or subcontractors. In order to ensure adherence to the project schedule, will direct scheduling and expediting of materials and equipment purchased by subcontractors.

### **1. Procurement Procedures**

Procurement Procedures are published in the Corporate Project Procedures Manual. The following sections detail Procurement Procedures for this project. We implements these controls for every large project to ensure that the client receives the best value in materials and equipment as well as a quality installation effort.

#### **1.1 Prequalification of Manufacturers / Vendors / Construction Contractors**

Select Manufacturers / Vendors / Construction Contractors based on our own Qualified Vendors List (QVL). The stated purpose of the QVL is to ensure the best value and the highest quality in workmanship, materials and equipment for and our clients. Each manufacturer / vendor / contractor listed on the QVL has been evaluated based on past performance using the following criteria:

- Proper documentation of and compliance with inspection/test requirements
- Quality of workmanship
- Efficient handling of Purchase Orders
- Adherence to shipping schedules
- Prompt resolution of non-conforming material problems
- Compliance in manufacture and supply with specifications
- Warranty Work
- Product or Product Lines
- QA/QC audit (if necessary)
- Price

New vendors / contractors with no previous history are evaluated based upon the following:

- Product Lines

- Project Histories for similar projects
- Discussion with former Client Contacts
- Financial Stability
- Staff Qualifications
- Capability to complete the project
- QA/QC Audit (Manufacturers / fabricators if necessary)
- Client List

## **1.2 Material / Equipment / Parts / Services Selection**

This section provides an overview of methodology in selecting materials, equipment, parts and services. Expediting procedures are included to ensure that the project schedule is not impacted by shipping delays.

The established twelve main stages in the procurement of materials, equipment, parts and services:

- Preparation of the Specifications for equipment and materials
- Identification of each item and preparation of purchase requisitions
- Issuing the Request for Quotation
- Quotation Review, Negotiations and selection of vendor or contractor
- Preparation and Placement of the Purchase Order
- Scheduling delivery of the Purchase Order
- Expediting the Purchase Order
- Receipt of Materials/Equipment/Parts and Inspection of same
- Inspection of Contracted Services and Approval of Same
- Resolution of any Non Conforming Material problems as well as any Corrective Action Items
- Field Purchase Orders

## **2. Equipment / Material Specification Preparation**

Procurement specifications originate in the Engineering Department. The Engineering Manager will task staff engineers with the generation of specifications. The Engineering Manager and the Project Manager will review the equipment specification for compliance with applicable codes/standards and contract specifications. If Client approval is required, the Project Manager will forward specification to Client, obtain approval signatures, and then return the approved specifications to the Engineering Manager.

Standard Specifications are divided into two (2) classes, "short form" and "book type." Short form specifications are used whenever good engineering practice and contractual arrangements permit. They are simple and flexible. "Book type" specifications are more formal, more expensive, and may be used on major engineered items of equipment, usually at the request of the Client.



DERWICK ASSOCIATES CORP.

## **2.1 Purchase Requisitions**

Purchase Requisitions will originate with engineering. The Purchase Requisition will be approved by the Project Manager or Engineering Manager prior to submittal to the Purchasing Department. The Requisition will be checked by either the Engineering Manager or the QA/QC Manager for compliance to specifications. The Purchase Requisition will then be forwarded to the Purchasing Manager. The Purchasing Manager will direct that the Request for Quotation (RFQ) be developed and sent to approved suppliers on QVL. The specifications developed by Engineering will be attached to the RFQ.

The vendor or subcontractor shall be given sufficient time to prepare their bid for equipment or services. The time frame for bidder response shall be so stated on the RFQ.

## **2.2 Quotation Reviews**

Each quotation will be reviewed prior to the issue of a Purchase Order. Major Equipment, Material, and Contracted Services purchases will be reviewed by a representative from the applicable engineering discipline and project management.

## **2.3 Purchase Order**

Following evaluation of quotations and completion of negotiations, an award will be made. The Purchasing Manager will generate the Purchase Order.

Purchase Orders include the following:

- Detailed description of products and services
- Required delivery date
- Test and Inspection requirements, if applicable
- Terms of payment
- Shipping information and point of contact
- Required documentation

A Purchase Order Log will be maintained at all times. Purchase Progress Reports will be updated weekly.

### **2.3.1 Expediting the Purchase Order**

Purchasing Manager will delegate an expeditor to track delivery of major equipment and materials for the project. The expeditor will closely monitor the progress in fabricating or gathering of materials from each vendor of equipment and materials which could impact the project schedule.



DERWICK ASSOCIATES CORP.

### **2.3.2 Closing out of Purchase Orders**

Documented receipt of equipment / materials in good order will be forwarded to the Administrative Manager and the Purchasing Manager. Contracted services will be inspected and signed off upon satisfactory completion. At this time, the Administrative Manager will sign these documents and direct the Purchasing Manager to forward same to Accounting for payment. Payment will be by terms agreed to on Purchase Order.

### **2.3.3 Field Purchase Orders**

Field Purchase Orders will require approval from Purchasing Manager. Field Purchase Orders will be documented, and a written Field Purchase Order Log will be maintained.

## **2.4 Material / Equipment Receiving Inspection**

Receiving Inspections will be performed on all major equipment / material for the project. QA/QC project staff will perform the inspection. Methodology is discussed in detail in the project QA/QC Section of this document.

All materials requiring Material Certifications and/or Material Test Reports (MTRs) will be checked for compliance to project specifications. Materials received without the proper certifications will be tagged and segregated until such required documentation is received.

### **2.4.1 Hazardous Materials Storage**

All coating materials, lubricants, flammable solvents, and other items identified by the Project Manager or the Owner as falling under Hazardous Material designation will be segregated from other project materials and equipment. These items will be stored in a secure location. All MSDS sheets will be posted in this area concerning each type Hazardous Material. An inventory will be maintained detailing receipt and issuance of any said material to installation staff and/or subcontractor.

If a subcontractor will directly receive or bring upon jobsite any materials in this category, they will be directed to comply with the established HAZMAT storage materials plan. This plan will be issued as a separate document and will be available at site for all personnel to review.



DERWICK ASSOCIATES CORP.

## **2.5 Corrective Action / Non-Conforming Equipment / Materials**

All equipment / materials which do not reflect compliance to project specifications, shipped without MTRs, damaged in shipment, etc. will be tagged and segregated until such time as vendors resolve the problem. Methodology for these processes is discussed in detail in the QA/QC section of this document.

### **D. Test Plans**

Test plans will be developed for testing each segment of the project both independently and collectively. Test plans will explain the purpose of the tests, define inputs, specify procedures, and acceptance criteria.

#### **1. Measurement and Test Equipment**

Measurement and test equipment used for inspection and acceptance testing shall be calibrated at established intervals against certified standards. All subcontractor and vendor test equipment used for vendor acceptance testing in connection with this contract shall meet the same calibration requirements.

#### **2. Documentation**

Inspection and testing documentation will be prepared in clear language. Test procedures will define all conditions and materials required for the test, specify test equipment and provide pass/fail criteria.

Reports will be prepared to document the results of each inspection and test performed. The records will identify the test equipment used, the observations made, the deficiencies found and the corrective actions taken.

#### **3. Definition of Test Types**

- a. Factory Tests are defined as tests performed at the location where the item is produced, fabricated, manufactured or assembled prior to shipment to the site.
- b. Field Verification Tests or Pre-Operational Tests are tests performed after installation. These tests verify that components and subsystems are installed and perform correctly.
- c. The Operational Systems Test is a comprehensive test of the installed system. The results of this test determine acceptance or rejection of the system.

- d. Performance tests are a series of tests to verify project-mandated performance guarantees.

#### **E. Corrective Action**

When problems or deficiencies are discovered in workmanship and/or materials during the inspection process, they will be documented. The inspector will prepare a Corrective Action Request (CAR) detailing the problem and submit it for resolution. The QA Inspector will forward the CAR to the QA Manager and the Project Manager. Corporate Project Management will investigate the problem and direct the proper course of action. All Corrective Action Requests shall be maintained for future reference or analysis as may be required.

### **IV. INSPECTION REQUIREMENTS**

#### **A. Responsibilities**

Perform the inspections and/or tests required to substantiate that the materials and services conform to requirements. The Client may witness any of the inspections or tests. All errors and/or defects discovered during inspections and/or tests shall be documented.

#### **B. Classification of Test**

Test Classifications include factory testing of components and major subsystems, field testing, and on-site final acceptance testing of the complete system. Some of the individual component and subsystem testing may be performed concurrently with the Operational Test. Construction Inspections will be performed during the installation work.

##### **1. Factory Testing**

Factory testing will be accomplished as required to ensure compliance with the contract specifications. Prior to shipment from the factory, some components and/or subsystems may be tested to demonstrate their compliance with the specifications. These items shall be identified and noted on the purchase order.

##### **2. Operational System Test (OST)**

A test of the entire System in full operational mode will be conducted to verify correct operation of all subsystems and system components. All functional capabilities of the system will be demonstrated. Following completion of the test, we will prepare and submit a test report.



DERWICK ASSOCIATES CORP.

These test procedures will be developed during the project construction phase and will be delivered to the client for approval prior to Operational Testing efforts being undertaken.

**C. Test Documentation**

The Quality Assurance Manager will ensure that test procedures and test reports are prepared as outlined herein. Test documentation will be issued to the client. Test procedures will be developed for testing components, subsystems and the overall system. Testing shall demonstrate that the system design meets the requirements and that materials and workmanship are as specified. Test results shall be recorded and bound with the test procedures to form a permanent record.

**V. PROJECT SPECIFIC INSPECTIONS AND TESTS**

The project warrants a wide variety of inspections and tests. The following sections briefly describe the project inspection and test requirements by function and/or discipline.

**A. Site Preparation**

- Confirmation of site dimensions.
- Confirmation of topographical elevations on completion of final grading. Assumes existing elevation is within two (2) feet of final grading level.
- Confirmation of Water Run Off Control after Final Grading is achieved
- Review of complete soil compaction and associated tests.

**B. Ground Grid**

- Confirm grid installed at correct depth and dimension with correct materials.
- Observe and confirm that junctions, splices, and taps are made with the correct Thermic weld type molds or pressure connectors and tools.
- Observe and confirm that correct wire and size are used with regard to ground rods.
- Perform ground grid resistance test.

**C. Concrete Foundations, Walls and Slabs**

- Confirmation of correct locations and dimensions of concrete foundation and wall forms.
- Confirmation of correct size and spacing of rebar in concrete foundations.
- Confirmation of proper anchor bolt sizes and location.
- Verify procurement of correct concrete strength.
- Witness the taking of necessary concrete samples for "slump" and "strength tests."
- Obtain qualified testing lab for concrete strength tests.
- Confirm proper correct elevations and slope of all slabs, walls, etc.





DERWICK ASSOCIATES CORP.

- Document above items on concrete pour card.

#### **D. Electrical**

- Confirm the receipt of each major item of electrical equipment. Verify specification compliance and inspect for transit damage.
- Confirm that receipt of all equipment and miscellaneous materials - conduits, cabling, etc., adhere to procurement requirements.
- After wiring is pulled and prior to connection, the wire will be Megger tested and all test results will be recorded on a Megger / Hi-Pot Test Record Form.
- Observe all conduits routing to ensure adequate turning radius for cable pulling.
- Perform detailed point-to-point wiring checks to verify power, control, and instrument wiring.
- Perform pre-operational tests on all electrical equipment and systems.
- Confirm tagging and labeling, verify and document as-built drawings.

#### **E. Structural Steel**

- Confirm correct size and type of structural steel.
- Confirm proper installation of anchor bolts, washers, and nuts installed, as required.
- Verify that qualified welders perform welding in accordance with applicable codes.
- Visually inspect all field welds to confirm they are complete and adequate.
- Verify paint and corrosion protection.

#### **F. Piping and Welding**

- Confirm correct size, rating, etc., of each piping system as applicable.
- Verify that qualified welders are utilized. Inspect piping fit up to ensure proper workmanship is utilized.
- Obtain qualified testing lab for welding radiography.
- Set up welding inspection and test procedures in accordance with applicable codes and standards.
- Set up a detailed welding documentation system to address individual pipe code, each weld, x-ray, welder, welding map, date, and inspector review.
- Establish a pipe cleaning procedure.
- Witness hydrostatic testing and test procedures, as required by various codes for each piping system.



DERWICK ASSOCIATES CORP.

---

**G. Instrumentation**

- Confirm all instrumentation and control equipment adheres to procurement requirements.
- Confirm instrumentation specification compliance, and inspect for transit damage.
- Observe individual calibration of each instrument, confirming range, accuracy, etc. in accordance with specifications and applicable codes.
- Perform functional loop checks and document same.

**H. Documentation**

Test and Inspection Documentation will be maintained on site throughout the project construction, commissioning and startup phase. The client will be allowed access to this data at any time.

Following Completion of Startup and Commissioning, the full battery of project Testing and Inspection Documentation will be delivered to the Client.

**VI. SHIPPING AND HANDLING**

Procedures for shipping and handling of materials will ensure that all shipments meet the requirements for identification, packing, packaging and data submittal. Contractor will be responsible for packing, shipping, receiving and installing the component parts and subsystems that comprise the complete system. The degree of protection and method of handling will be consistent with the anticipated hazards.

Contractor will ensure that the appropriate shipping and handling procedures will be followed. Should damage occur in transit, it will be repaired or replaced as appropriate.



DERWICK ASSOCIATES CORP.

---

## PART 2 PROJECT SPECIFIC TEST AND INSPECTION PROCEDURES

### TABLE OF CONTENTS

- I. SCOPE
- II. STANDARDS AND CODES
- III. TESTS / INSPECTIONS-CIVIL
- IV. TESTS / INSPECTIONS GROUND GRID
- V. TESTS / INSPECTIONS-MECHANICAL
  - A. Structural Steel
  - B. Welding Inspections/Tests
  - C. Natural Gas Piping
  - D. Lube Oil System
  - E. Hydraulic System
  - F. Raw Water System
  - G. Fire Water System
  - H. Pump Testing
- VI. WELDER QUALIFICATIONS
- VII. AREA DESIGNATION
- VIII. MATERIAL TEST REPORTS
- IX. SUB-SYSTEMS MECHANICAL TESTS
  - A. Fuel System Tests
  - B. Lube Oil System Tests
  - C. Hydraulic Starter System Tests
  - D. Instrument Air System Leak Tests
- X. SPECIFIC TESTS-ELECTRICAL
  - A. Ground Grid Integrity Test
  - B. Cable Insulation Testing-Megger
  - C. Cable Insulation Testing-Hi Potential Testing
  - D. Cable and Conduit Installation-Inspections
  - E. Point to Point Testing
  - F. Switchgear, Motor Control Centers, Breakers and other Electrical Components, Instrumentation
- XI. FACTORY ACCEPTANCE TESTS / INSPECTION
- XII. START-UP TESTING AND COMMISSIONING
- XII. REPORTS



DERWICK ASSOCIATES CORP.

## Frame 7EA Power Project Technical Scope Document

### PART 2 PROJECT SPECIFIC TEST AND INSPECTION PROCEDURES

#### I. SCOPE

The following civil, mechanical and electrical test and inspection requirements have been developed for the project.

The civil, mechanical and electrical tasks on this project shall comply with the standards set forth in this document to ensure both the safety and quality of the installation. This document stipulates the inspections and tests that will be performed on the project.

#### II. STANDARDS AND CODES

The following organization's standards and codes are applicable to design and construction practices for the project.

ANSI B31.3	Plant Piping
ASME IX	Welder Qualifications
AWS A3/0	Definitions of Welding Terminology
AWS B2.1-84	Standard for Welding Procedure and Performance Qualification
AWS D1.1	AWS Code for Structural Welding
AISC	American Institute of Steel Construction – Various sections
ASTM	American Society for Testing Materials – Various Sections
ASME	American Society for Mechanical Engineers – Various Sections
ISA S5.1	Instrumentation Symbols and Identification
NACE RP018890	Standard Recommended Practice: Discontinuity (Holiday) Testing of Protective Coatings
NEMA AB1	Molded Case Circuit Breakers
NEMA ICS1	General Standards for Industrial Control and Systems
NEMA ICS2	Industrial Control Devices, Control and Systems
NEMA ICS4	Terminal Blocks for Industrial Use
NEMA ICS6	Enclosures for Industrial Controls and Systems
MG1	Motors and Generators
PE5	Constant-Potential-Type Electric Utility (Semi-Conductor Static Converter) Battery Chargers
SG2	High Voltage Fuses
WC2	Rubber Insulated Wire and Cable for the Transmission and Distribution of Electrical Energy
NFPA70	National Electric Code
NFPA No. 1	Carbon Dioxide Extinguishing Systems
NFPA No. 37	Stationary Combustion Engines and Gas Turbines
OSHA CFR Title 29	Occupational Safety and Health Administration
(Note: Codes and Standards may also include Codes and Standards issued by other organizations as directed by Owner.)	

### **III. TESTS / INSPECTIONS - CIVIL**

Inspections will be undertaken throughout the civil portion of the project. The site dimensions will be confirmed. Topographical elevations will be confirmed following grading. All concrete slab and wall dimensions will be confirmed prior to concrete pouring. All concrete will be confirmed to be compliant with design specifications. A qualified third party inspection agency will be retained to conduct slump tests prior to and during concrete pours. All concrete will be strength-tested intervals per ASTM standards. Grouting of mechanical equipment skids will be performed per the developed specifications.

### **IV. TESTS / INSPECTIONS - GROUND GRID**

The ground grid will be inspected throughout installation to ensure that materials used are per design specifications and that installation splices, junctions, and taps are made properly. Depth and dimensional boundaries will be measured and recorded. At the conclusion of installation, the grounding grid will be tested using a test instrument specifically for the task to confirm acceptable impedance levels.

### **V. TESTS / INSPECTIONS - MECHANICAL**

Several elements of the project will require welding during fabrication and installation. These elements include:

- Structural Steel
- Fuel System - Natural Gas Fuel System Piping
- Fuel System - Liquid Fuel System Storage Tank and Piping
- Process Water Systems
  - Raw Water System Storage Tank and Piping
  - Waste Water System Piping
  - Firewater System Piping (HDPE piping Thermal Welding Inspections)
- Oily Waste System
- Lube Oil System

The welding inspection criteria for each of these tasks will be based upon the applicable codes and standards. The following paragraphs briefly describe each task and stipulate the specific code and/or standard(s) that apply.

#### **A. Structural Steel**

The structural steel aspects of the project will consist of the building related structural steel and various supports of racks. Design and erection of these assemblies shall be in accordance with the latest edition of the AISC. All welding will be visually inspected per AWS applicable codes and standards.

## **B. Welding Inspections/Tests**

All welders are required to have current certification of their qualifications. Current certifications should indicate the welder has been tested to the project welding procedures within one year prior to welding on project piping.

All visual-welding inspections will be performed by persons who have current certification from AWS or ASNT-TC-1A. All NDE will be performed and approved by persons holding current ASNT-TC-1A Level II certification for the specific test processes implemented. All visual welding inspections will be performed based on the criteria established in ANSI B31.1 and AWS D1.1.

Radiographic Testing (RT) where necessary will be performed in accordance with standards established by ASME Boiler and Pressure Vessel Code, Article 2, Section V, except as stipulated in the applicable code, ANSI B31.3 (Pipe welding inside Plant Battery Limits).

All radiographs of full penetration welds must be accepted by a certified Level II inspector with current certification under ASNT-TC-1A. Accept/Reject criteria for all welds shall be in accordance with criteria established as well as applicable codes. Any rejections will require two (2) weld penalty shots on that welder. If in the judgment of the Site QA/QC Manager that a welder or welders have excessive rejections; may demand the welder be removed from the project or certified to weld on only non critical piping.

## **C. Natural Gas Piping**

Piping from the supply source to the Fuel Filter/Separators will be Carbon Steel. The piping on the downstream side of the filter/separators will change to Stainless Steel piping. All Natural Gas piping will be designed and constructed to ANSI B31.3.

A total of 100% of the pipeline welds (100% of each weld) will be subjected to Radiographic Testing (RT).

All radiographs of full penetration welds must be approved and accepted per criteria established in Section B above.

## **D. Liquid Fuel System**

All piping systems will be visually inspected by Craft Inspectors qualified to visually inspect these systems. 10% carbon steel piping welds will undergo RT, 100% of the weld. RTs will be examined and approved by a Level II or II ASNT-TC-1A qualified technician.

PE or RTR lines will undergo hydro or pneumatic testing. If Hydrotest is used, water as the test medium hydro will be 1.5 times design pressure up to a maximum of 150 PSI. If a pneumatic test is decided upon, the test pressure will be 1.2 times design pressure.

#### **E. Lube Oil System**

The Lube Oil system consists of a skid and interconnecting stainless steel piping to the Gas Turbine Package. All interconnecting pipe welds shall be in accordance with ANSI B31.3. All Lube Oil system welds will undergo visual inspection or testing in accordance with ANSI B31.3. Ten percent (10%) of these welds will undergo RT testing (100% of the weld)

#### **F. Hydraulic System**

The Hydraulic System consists of a skid and interconnecting stainless steel piping to the Gas Turbine Package. All interconnecting pipe welds shall be in accordance with ANSI B31.3. All Hydraulic system welds will undergo visual inspection or testing in accordance with ANSI B31.3. Ten percent (10%) of these welds will undergo RT testing (100% of the weld)

All radiographs of full penetration welds must be approved and accepted per criteria established in Section B above.

#### **G. Raw Water System**

The Raw Water System consists of Carbon Steel Piping.

Raw Water System piping welds will be visually inspected.

#### **H. Process Water Systems**

All welded steel piping will be visually inspected as welds are completed. All PVC piping joints will be inspected as they are made up. The Process water systems will be inspected prior to startup. All pumps will be balanced. Remaining components will be inspected and confirmed that they are supplied and installed per specifications.

#### **J. Pump Testing**

All pumps supplied will be balanced and confirmed as fully operational prior to startup.

### **VI. WELDER QUALIFICATIONS**

Welders qualified according to the appropriate codes shall make all welds on the project:

- |                                   |               |
|-----------------------------------|---------------|
| • Structural Steel                | AWS CODE D1.1 |
| • Fuel System Piping              | ANSI B31.3    |
| • Lube Oil System Piping          | ANSI B31.3    |
| • Hydraulic Startup System Piping | ANSI B31.3    |



DERWICK ASSOCIATES CORP.

All welders will be required to provide certification of their qualification to the appropriate standard. Each welder's certified qualifications will be reviewed and approved by the welding inspector prior to the welder's beginning work on the project. Applicable welding procedure specifications (WPS) and Procedure Qualification Reports (PQRs) will be required. All reports and certifications will be in accordance with ASME Section IX Article II.

## **VII. AREA DESIGNATION**

Areas where combustible fluids, gases or vapors might be present shall be classified as hazardous areas or hot areas. Guidelines for welding in these areas will be drawn from ANSI Z49.1. Areas designated as safe areas will be those areas on site remote from hazardous areas and where no contact with combustible fluids, gases and vapors are present. Welding in these safe areas, as well as on-site welding fabrication, will be subject to the same standards and codes listed in the previous paragraphs. The welding inspector shall designate an area classification for the project.

## **IX. SUB-SYSTEMS MECHANICAL TESTS**

The test requirements for the various tasks on the project are defined in the following paragraphs. Tests are defined in this case to be "system" centered, i.e., hydrostatic tests, vacuum tests, etc., versus inspections which are "component" centered. All tests shall be performed in the presence of a QA/QC inspector or his designee. All tests shall be documented with a written test report. The test report shall include a description of the test, the item or items tested, the procedure used, the date and time of the test and the test results. All test documentation shall be signed by the inspector.

### **A. Fuel System Tests**

All fuel system piping shall be subjected to hydrostatic leak testing to 1.5 times the design pressure. Non-pipe components of the system shall be isolated from the test. The hydrostatic leak test pressure shall be held for a minimum of 1 Hour and then reduced in accordance with ANSI B31.3 to conduct examination for leakage. Pneumatic tests on the PE or RTR may be substituted at 1.2 times design pressure.

### **B. Lube Oil System Tests**

All Lube Oil System piping shall be subjected to hydrostatic leak testing to 1.5 times the design pressure. Non-pipe components of the system shall be isolated from the test. The hydrostatic leak test pressure shall be held for a minimum of 1 Hour and then reduced in accordance with ANSI B31.3.

### **C. Hydraulic Starter System Tests**

All Hydraulic Starter System piping will be subjected to hydrostatic leak testing to 1.5 times the design pressure. Non-Pipe components of the system shall be isolated from



the test. The hydrostatic leak test pressure shall be held for a minimum of 1 Hour and then reduced in accordance with ANSI B31.3.

**D. Process Water System Tests**

All metallic process water system piping will be leak service tested prior to commissioning. The piping systems under test will be brought up to Normal Operating Pressure and this pressure will be held for 10 minutes or as long as it takes to check each joint or fitting on the line under test. Test shall be conducted in accordance with ANSI B31.3 to conduct examination for leakage. Piping Systems which will be tested in this manner are the following:

- Cooling Water Systems (New Piping)
- Oily Water Piping

**E. Instrument Air System Leak Tests**

Instrument air piping systems will be subjected to a Pneumatic Leak test following installation. Pressures will be raised to Normal Operating Pressures levels for each system and held for a minimum of 10 minutes.

**X. SPECIFIC TESTS – ELECTRICAL**

**A. Ground Grid Integrity Test**

The new installed grounding cables/rods will be attached to the existing system. Installed Ground Grid will be tested using a suitable multimeter to measure integrity prior to startup. Continuity and resistance will be confirmed for the new installed cables/rods. The readings will be recorded for record.

**B. Cable Insulation Testing - Megger**

All 600 Volt and above wire and cable to be used on this project will undergo an insulation test or tests to ensure cable is suitable for intended usage and has structural integrity for installation. All low voltage cables, below 600 volts, will be tested for continuity prior to being energized.

All medium and high voltage cable and wire will undergo Megger testing. Cables will be tested to levels established not to exceed the rated voltage of the cables. Megger testing will be performed with a calibrated test instrument certified to national standards.

The results will be recorded and maintained for record. A cable failing a Megger test will be tagged, segregated and removed from the job site.

**C. Cable Insulation Testing - Hi Potential Test**

Medium and high voltage cables will undergo Hi-Potential testing to detect any insulation breakdown in these cables.

Testing will be accomplished with a calibrated instrument certified to national standards. Results will be recorded and maintained for record.

**D. Cable and Conduit Installation - Inspections**

All cable, conduit and associated fittings will be checked to ensure compliance to specifications developed for this project. Conduit, fittings and cable installation will be monitored during construction to ensure compliance to NEC codes.

**E. Point to Point Testing**

All installed cables shall be point-to-point tested prior to being energized. The point-to-point test shall confirm cables are installed as designed and phased properly.

**F. Switchgear, Motor Control Centers, Breakers, and other Electrical Components, Instrumentation**

All switchgear, motor control centers, breakers and other electrical components, will be inspected and tested prior to and following installation. Specific test procedures will be developed for each major piece of equipment to be installed. Electrical components will be inspected prior to installation and, in most cases, will be tested as part of a larger sub-system. Instrumentation will be inspected prior to installation and calibrated following installation. Instrumentation will be tested as part of a larger sub-system.

**XI. FACTORY ACCEPTANCE TESTS / INSPECTIONS**

The Client has the right to request the contractor an inspection of the equipment and witness all factory tests prior to shipment to the Project site if schedule allows. Tests will be undertaken at the manufacturer or fabricator's facility prior to being shipped to site.

**XII. STARTUP TESTING AND COMMISSIONING**

Startup testing and commissioning will involve integration of all sub-systems into a complete system-wide test of operation. Testing will involve operation of all sub-systems listed below:

- Process Water Systems – Raw Water Supply System and Firewater System
- Fuel Gas Delivery System
- Gas Turbine Startup
- Gas Turbine Electrical Transmission
- Breaker Operation
- Protective Relays, Breaker Testing



DERWICK ASSOCIATES CORP.

---

### **XIII. REPORTS**

A copy of all inspection and test reports shall be maintained in a file at the project site. These reports shall be made available for review and reference as may be required throughout the project. The original copies of all inspection and test reports shall be forwarded periodically to the Quality Assurance Manager for review and safekeeping. Quality related problems that cannot be readily corrected at the project site will be immediately referred to the Quality Assurance Manager for resolution.



DERWICK ASSOCIATES CORP.

## Frame 7EA Power Project Technical Scope Document

---

### Section 10.0 Exceptions and Clarifications

For clarification of the project the following exceptions and assumptions are stated:

#### 10.1 The Scope of Supply of this document does not include the following outlined items:

- Real estate property on which the Power Project is to be sited.
- Local, state, and/or government taxes associated with the Owner's corporations.
- Local, state, and/or government taxes associated with the Contractor furnished equipment.
- Any site environmental cleanup.
- Environmental permits. (Note: Contractor will assist in obtaining all permits where applicable.)
- Local county or state construction permit. (Contractor will assist in obtaining.)
- Fuel gas for blow down, flushing, commissioning, start-up, and operation.
- Supply of Owner furnished items as outlined in Section 2.0 of this Proposal.
- Operating spares. (Contractor will submit a list of recommended spare parts.)

#### 10.2 This proposal is also based on the following assumptions:

- Owner to supply to Contractor or receive the items outlined in Section 2.
- Owner will provide all authority required to make the proposed utility interconnects.
- Owner will provide complete site for use as described in the TSD and associated drawings.
- Contractor to furnish and install "first fill" lubricants and chemicals for the plant.
- Contractor will provide soil borings to be utilized for site design.
- Owner to provide site survey as necessary
- Owner to provide custody transfer fuel metering and interconnect point at sit boundary as shown on drawings.



**DERWICK ASSOCIATES CORP.**

## **Frame 7EA Power Project Technical Scope Document**

- Owner to provide fuel for plant commissioning and start-up.
- Owner to provide rights-of-way for roadways, entrances, pipeline, and transmission line to the Power Project.
- Performance guarantees, administration of warranty conditions will be discussed and agreed upon and inserted into the appropriate sections of this document at contract signing.
- Contractor will transfer software licenses to the Owner at the completion of the project. This will include the license documentation passwords and keys. It will be the responsibility of the owner to maintain these licensing articles for the time when the software needs to be reinstalled.
- The Contractor supplied DCS shall allow for system expansion through the addition of controllers, operator stations in the control panels, process I/O systems and / or process controllers while the equipment associated with the controller/computer are in manual mode. Modifications can be preformed while the Power Plant is operational and the equipment in question is in manual mode. Proper safety precautions must be adhered to. "Tag out" procedures may be required.
- Operator stations in the control room can be expanded while in remote mode and the Power Plant is operational.
- Various vendor supplied PLCs for the major equipment will use either function block or ladder logic programming. The Balance of Plant PLC will use ladder logic programming. The Gas Turbines will utilize a GE designed control system.



DERWICK ASSOCIATES CORP.

---

## Section 11.0 Drawings

Please find on the following pages the following preliminary project drawings.

Overview Site Plant Lay-Out	10-001 Sh 1
General Arrangement Plot Plan	10-002 Sh 1
General Arrangement Plot Plan	10-002 Sh 2
One Line Diagram	60-001 Sh 1

LEGEND OF SYMBOLS:

- 1

GE 7EA GAS TURBINE

2

GSU TRANSFORMER (220 KV)

3

STEAM TURBINE GENERATOR (FUTURE)

4

STG TRANSFORMER (FUTURE)

5

WAREHOUSE/WORK SHOP

6

PEEC

7

CO2 TANK

8

OVERHEAD CABLE TRAY

9

OVERHEAD CABLE TRAY (FUTURE)

10

OFFICES/CONTROL/MAINTENANCE BUILDING
- 11

AUXILIARY TRANSFORMER (4.16 KV)
- 12

AUXILIARY TRANSFORMER (460 V)
- 13

OFFICE AND CONFERENCE ROOM
- 14

LUBE OIL COOLING FIN FAN
- 15

RAW/FIRE WATER TANK (300,000 GALS)
- 16

FIRE WATER SKID
- 17

HRSG (FUTURE)
- 18

PIPE RACK (FUTURE)
- 19

OILY WATER SEPARATOR
- 20

ROAD

21

EMERGENCY GENERATOR

22

WASTE OIL TANK

23

PARKING AREA

24

WATER TREATMENT BUILDING

25

TURBINE REMOVAL AREA

26

INSTRUMENT AIR DRYER PACKAGE

27

WASTE WATER TANK

28

WATER SKID

29

LIGHTING POLES

30

DEMIN WATER TANK (2-21,000 GAL EACH)

31

LIQUID FUEL TANK (RAW-100,000 GALS)

32

LIQUID FUEL FORWARDING PUMP

33

LIQUID FUEL DAY TANK (CLEANED-50,000 GALS)

34

LIQUID FUEL CENTRIFUGE SKID

35

LIQUID FUEL OFF LOAD AREA

36

LIQUID FUEL OFF LOAD PUMP

37

LIQUID FUEL FORWARDING PUMP

38

GAS METER RUN

39

ESD VALVE

40

PLANT FENCE

41

GUARD HOUSE

42

GATE

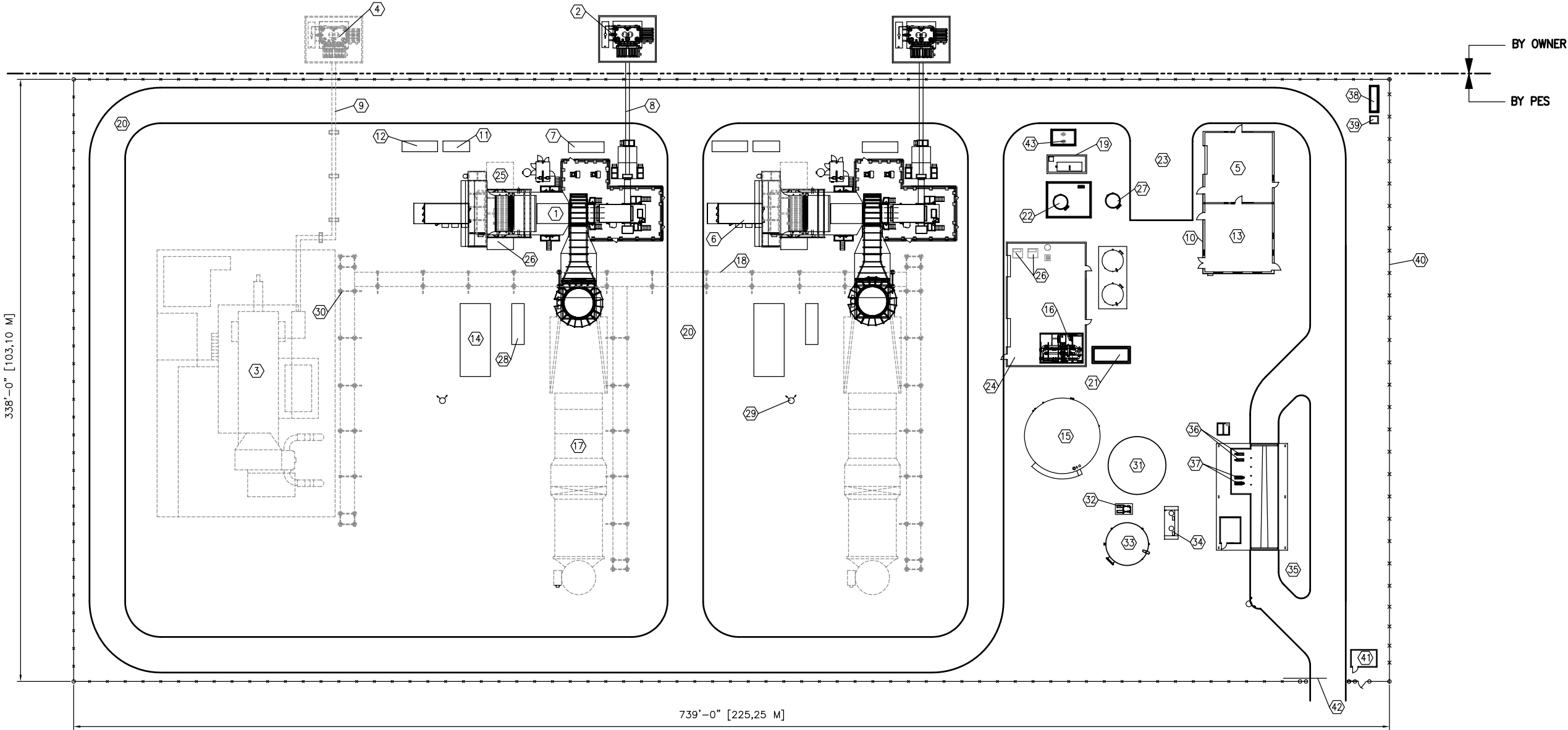
43


FUEL GAS FILTER/REGULAR SKID

44

OVERHEAD CABLE TRAY

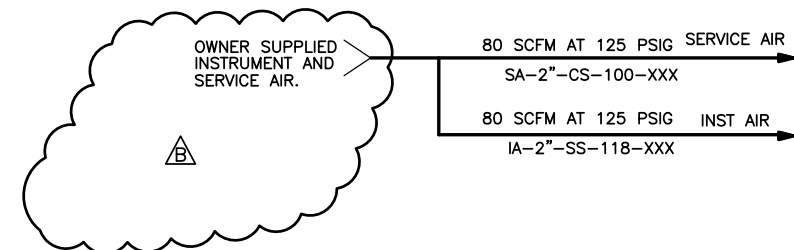
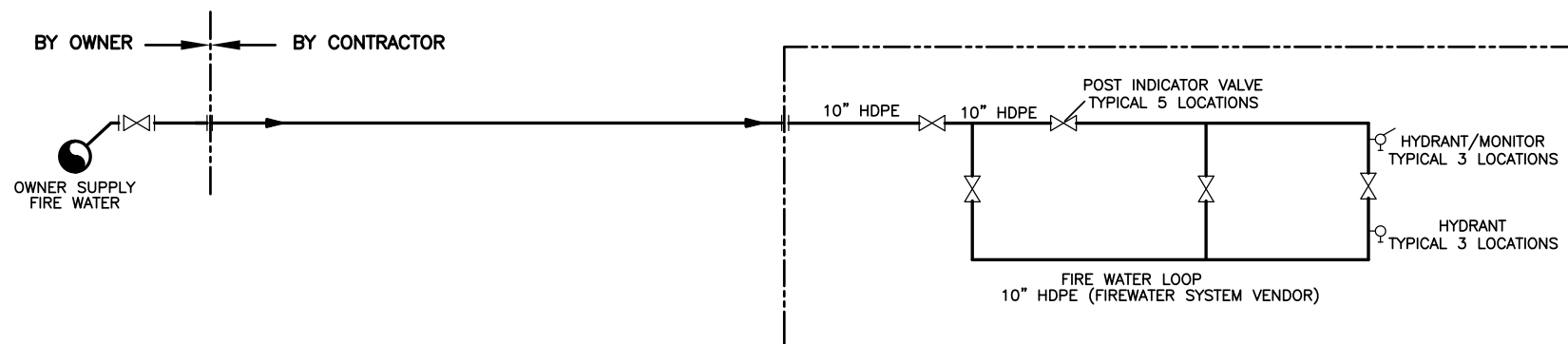
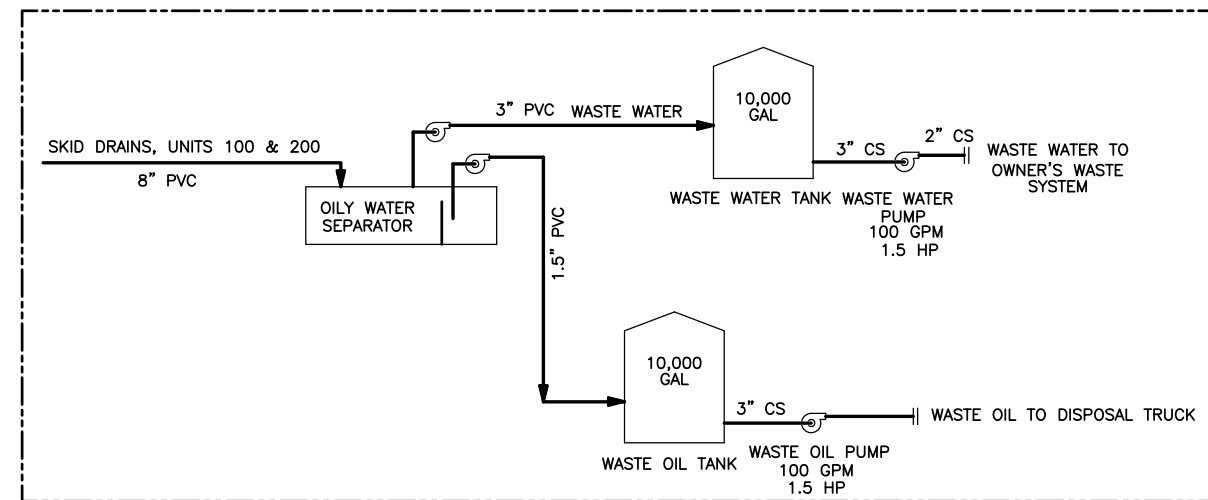
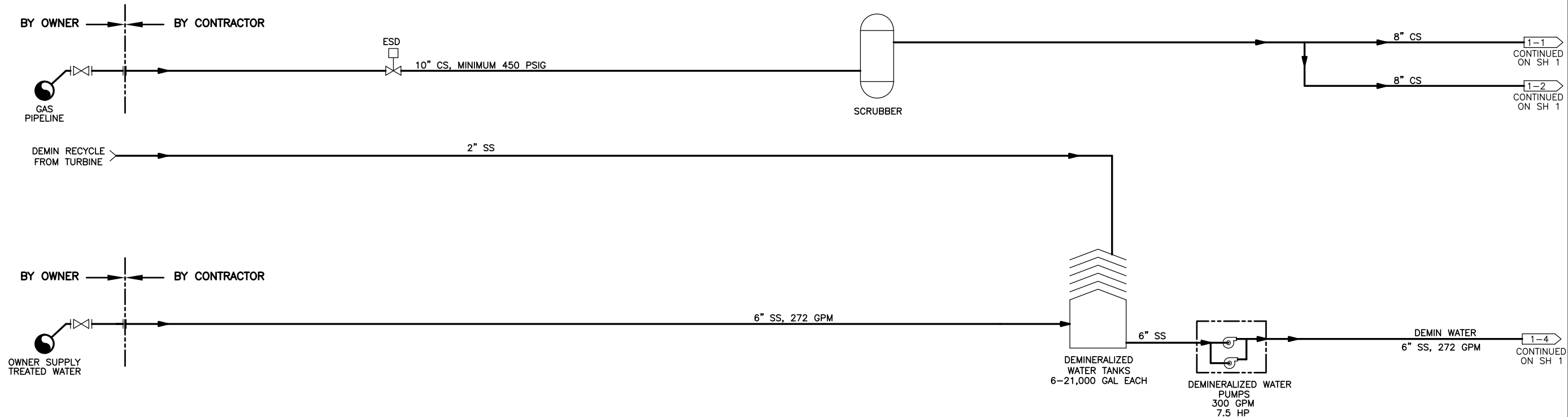
45


OVERHEAD CABLE TRAY (FUTURE)

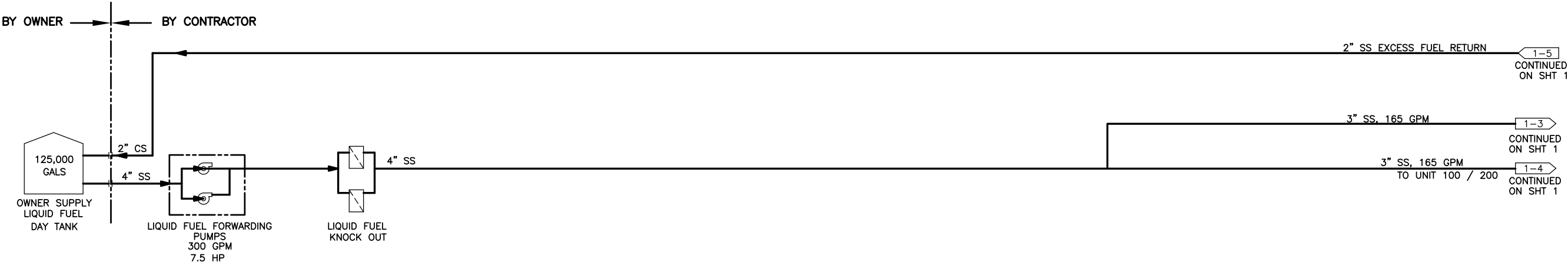
REVISED		CUSTOMER INFORMATION				© COPYRIGHT, 2008, ProEnergy SERVICES ALL RIGHTS, RESERVED. THIS DRAWING IS THE PROPRIETARY AND/OR CONFIDENTIAL PROPERTY OF ProEnergy SERVICES AND IS LOANED IN STRICT CONFIDENCE WITH THE UNDERSTANDING THAT IT WILL NOT BE REPRODUCED NOR USED FOR ANY PURPOSE EXCEPT THAT FOR WHICH IT IS LOANED. IT SHALL BE IMMEDIATELY RETURNED ON DEMAND, AND IS SUBJECT TO ALL OTHER TERMS AND CONDITIONS OF ANY WRITTEN AGREEMENT OR PURCHASE ORDER WHICH INCORPORATES OR RELATES TO THIS DRAWING.																		DRAWN SL 09/17/08				<div><div>10820 EAST 45TH STREET SUITE 100 TULSA, OKLAHOMA 74148 OFFICE FAX www.proenergyservices.com</div></div>				ProEnergy EPC Services, LLC																																																																																																																																																																																																																																																																																																																																																																																																																																																																																																																																																																																																																																																																																																																																																																																																																																																																																																																																																																																																																																																																																																																																																																																																																																																																																																																																																																																																																																																																																																																																																																																																																																																																																																																																																																																																																																																																																																																																																																																																																																																																																																																																																																																																																																																																																																																																																																					
																																GENERAL ARRANGEMENT PLOT PLAN																																																																																																																																																																																																																																																																																																																																																																																																																																																																																																																																																																																																																																																																																																																																																																																																																																																																																																																																																																																																																																																																																																																																																																																																																																																																																																																																																																																																																																																																																																																																																																																																																																																																																																																																																																																																																																																																																																																																																																																																																																																																																																																																																																																																																																																																																																																																																																					
																																				TWO (2) FRAME 7EA SIMPLE CYCLE UNITS																																																																																																																																																																																																																																																																																																																																																																																																																																																																																																																																																																																																																																																																																																																																																																																																																																																																																																																																																																																																																																																																																																																																																																																																																																																																																																																																																																																																																																																																																																																																																																																																																																																																																																																																																																																																																																																																																																																																																																																																																																																																																																																																																																																																																																																																																																																																																																	
																																								FUTURE COMBINED CYCLE																																																																																																																																																																																																																																																																																																																																																																																																																																																																																																																																																																																																																																																																																																																																																																																																																																																																																																																																																																																																																																																																																																																																																																																																																																																																																																																																																																																																																																																																																																																																																																																																																																																																																																																																																																																																																																																																																																																																																																																																																																																																																																																																																																																																																																																																																																																																																													
						NO.				DATE				BY				APP'D								DESCRIPTION				REVISIONS				DA MGR				SCALE 1"=30'				SIZE D																																																																																																																																																																																																																																																																																																																																																																																																																																																																																																																																																																																																																																																																																																																																																																																																																																																																																																																																																																																																																																																																																																																																																																																																																																																																																																																																																																																																																																																																																																																																																																																																																																																																																																																																																																																																																																																																																																																																																																																																																																																																																																																																																																																																																																																																																																																																																								</			



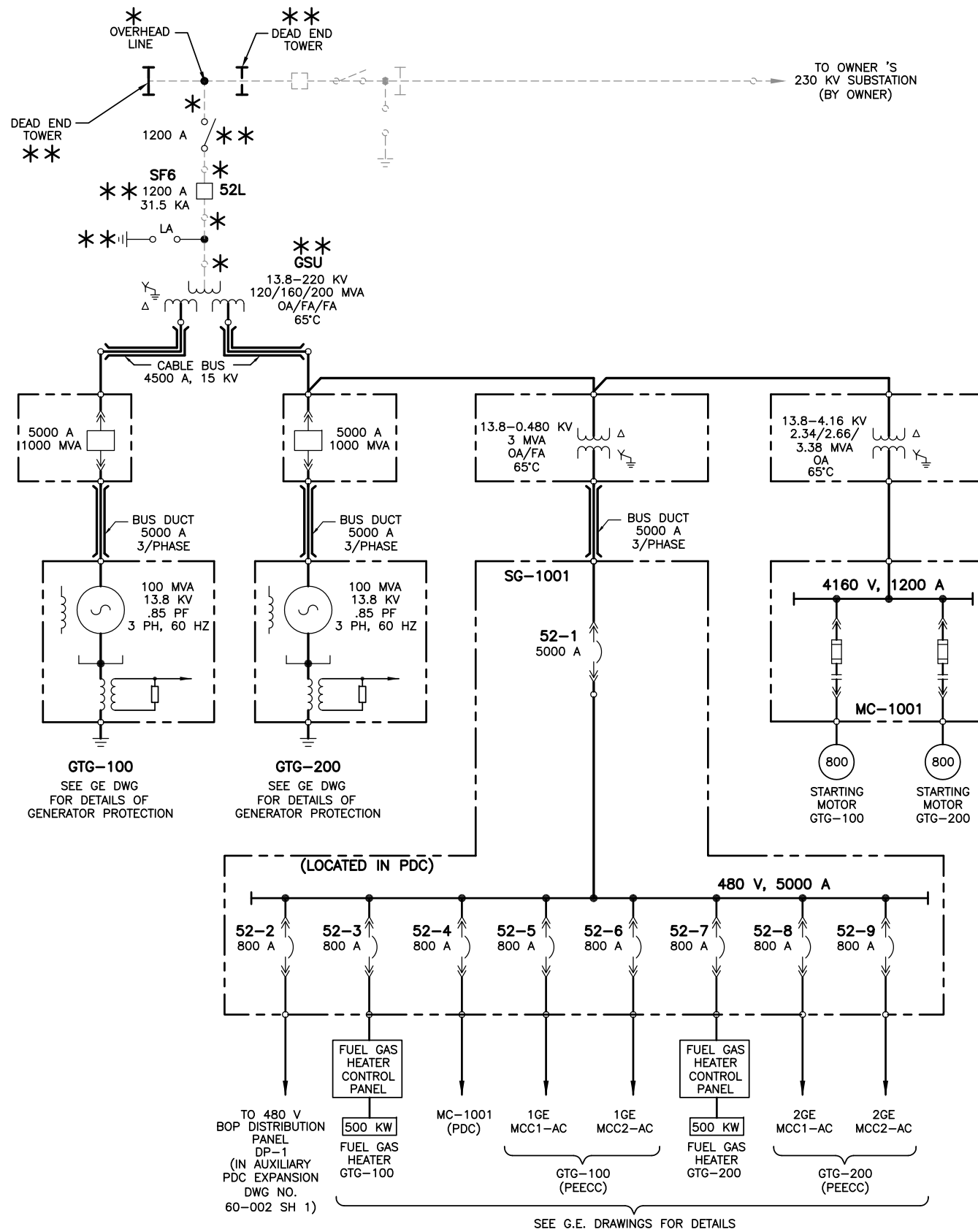




REVISED		CUSTOMER INFORMATION		© COPYRIGHT, 2008, ProEnergy SERVICES ALL RIGHTS, RESERVED. THIS DRAWING IS THE PROPRIETARY AND/OR CONFIDENTIAL PROPERTY OF ProEnergy SERVICES AND IS LOANED IN STRICT CONFIDENCE WITH THE UNDERSTANDING THAT IT WILL NOT BE REPRODUCED NOR USED FOR ANY PURPOSE EXCEPT THAT FOR WHICH IT IS LOANED. IT SHALL BE IMMEDIATELY RETURNED ON DEMAND, AND IS SUBJECT TO ALL OTHER TERMS AND CONDITIONS OF ANY WRITTEN AGREEMENT OR PURCHASE ORDER WHICH INCORPORATES OR RELATES TO THIS DRAWING.																		DRAWN SL 02/11/09				907 SOUTH DETROIT AVE. SUITE 1140 TULSA, OKLAHOMA 74120 OFFICE FAX www.proenergyservices.com		ProEnergy EPC Services, LLC PROCESS FLOW DIAGRAM TWO (2) FRAME 7EA GENERATOR UNITS POWER PLANT				MARACAJ, VENEZUELA																																																																																																																																																																																																																																																																																																																																																																																																																																																																																																																																																																																																																																																																																																																																																																																																																																																																																																																																																																																																																																																																																																																																																																																																																																																																																																																																																																																																																																																																			
														B		02/23/09		SL		JD		DELETED AIR INSTRUMENT COMPRESSOR.																																																																																																																																																																																																																																																																																																																																																																																																																																																																																																																																																																																																																																																																																																																																																																																																																																																																																																																																																																																																																																																																																																																																																																																																																																																																																																																																																																																																																																																																													

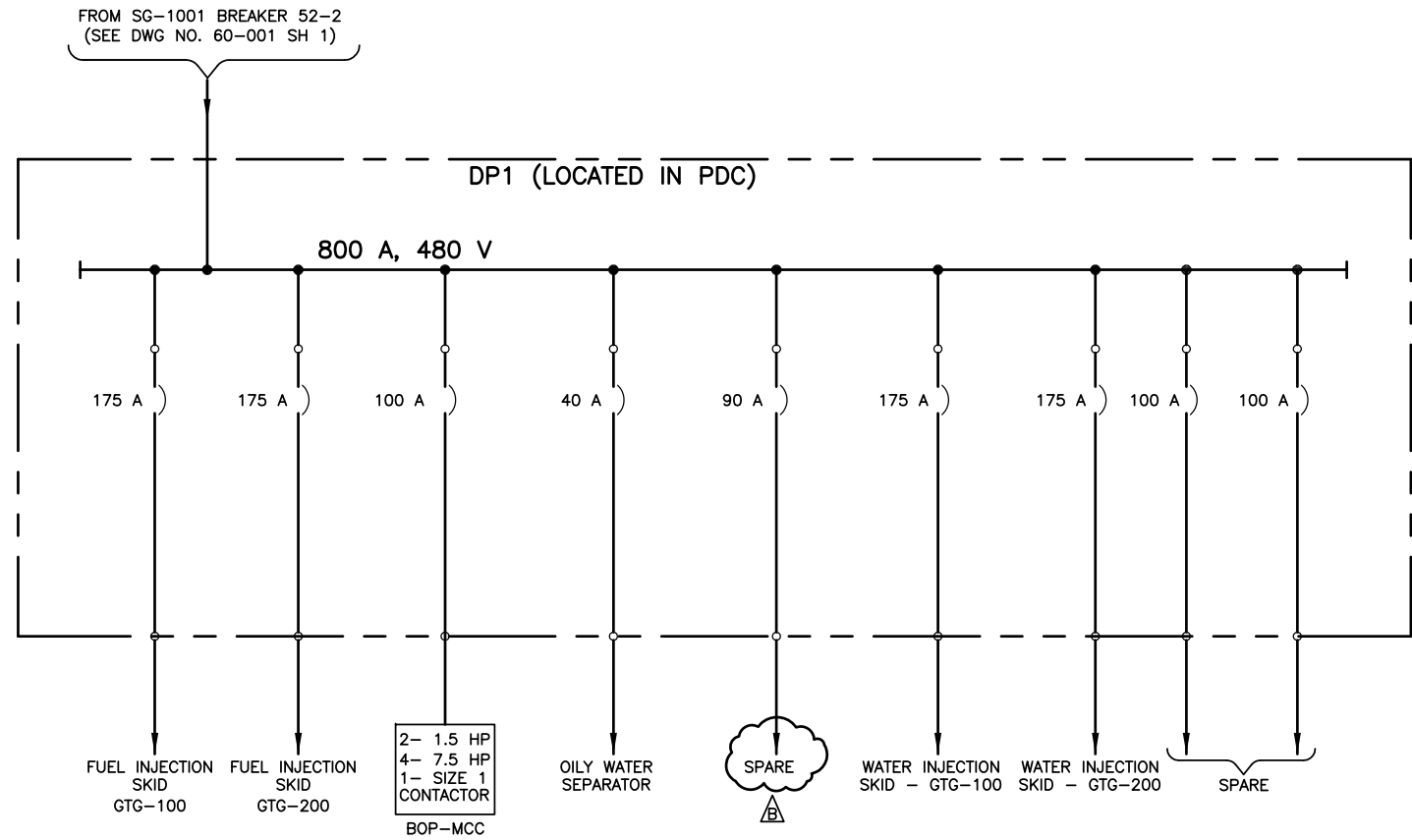



REVISED	CUSTOMER INFORMATION	© COPYRIGHT, 2008, ProEnergy SERVICES ALL RIGHTS, RESERVED. THIS DRAWING IS THE PROPRIETARY AND/OR CONFIDENTIAL PROPERTY OF ProEnergy SERVICES AND IS LOANED IN STRICT CONFIDENCE WITH THE UNDERSTANDING THAT IT WILL NOT BE REPRODUCED NOR USED FOR ANY PURPOSE EXCEPT THAT FOR WHICH IT IS LOANED. IT SHALL BE IMMEDIATELY RETURNED ON DEMAND, AND IS SUBJECT TO ALL OTHER TERMS AND CONDITIONS OF ANY WRITTEN AGREEMENT OR PURCHASE ORDER WHICH INCORPORATES OR RELATES TO THIS DRAWING.	NO.	DATE	BY	APP'D	DESCRIPTION	REVISIONS	DRAWN SL 02/11/09	CHECK	DESIGN	PROJ ENGR	PROJ MGR	QA MGR	SCALE NONE	SIZE D		907 SOUTH DETROIT AVE. SUITE 1140 TULSA, OKLAHOMA 74120 OFFICE FAX www.proenergyservices.com	<b>ProEnergy EPC Services, LLC</b> PROCESS FLOW DIAGRAM TWO (2) FRAME 7EA GENERATOR UNITS POWER PLANT	MARACAIBO JOB. NO. T9005-A	DWG NO. 50-001	SH NO. 3	REV A
---------	----------------------	---	-----	------	----	-------	-------------	-----------	-------------------------	-------	--------	-----------	----------	--------	---------------	-----------	--	---	--	----------------------------------	-------------------	-------------	----------



\* - BY OWNER.  
 \*\* - INSTALLED BY CONTRACTOR.

REVISED	CUSTOMER INFORMATION	© COPYRIGHT, 2008, ProEnergy SERVICES ALL RIGHTS, RESERVED. THIS DRAWING IS THE PROPRIETARY AND/OR CONFIDENTIAL PROPERTY OF ProEnergy SERVICES AND IS LOANED IN STRICT CONFIDENCE WITH THE UNDERSTANDING THAT IT WILL NOT BE REPRODUCED NOR USED FOR ANY PURPOSE EXCEPT THAT FOR WHICH IT IS LOANED. IT SHALL BE IMMEDIATELY RETURNED ON DEMAND, AND IS SUBJECT TO ALL OTHER TERMS AND CONDITIONS OF ANY WRITTEN AGREEMENT OR PURCHASE ORDER WHICH INCORPORATES OR RELATES TO THIS DRAWING.	NO.	DATE	BY	APP'D	DESCRIPTION	REVISIONS	DRAWN	SL	02/13/09		907 SOUTH DETROIT AVE. SUITE 1140 TULSA, OKLAHOMA 74120 OFFICE FAX <a href="http://www.proenergyservices.com">www.proenergyservices.com</a>	<b>ProEnergy EPC Services, LLC</b> ONE LINE DIAGRAM TWO (2) FRAME 7EA GENERATOR UNITS POWER PLANT			
									CHECK					JOB. NO.	DWG. NO.	SH. NO.	REV.
									DESIGN					T9005-A	60-001	1	A
									PROJ ENGR								
									QA MGR								



REVISED	CUSTOMER INFORMATION	© COPYRIGHT, 2008, ProEnergy SERVICES ALL RIGHTS, RESERVED. THIS DRAWING IS THE PROPRIETARY AND/OR CONFIDENTIAL PROPERTY OF ProEnergy SERVICES AND IS LOANED IN STRICT CONFIDENCE WITH THE UNDERSTANDING THAT IT WILL NOT BE REPRODUCED NOR USED FOR ANY PURPOSE EXCEPT THAT FOR WHICH IT IS LOANED. IT SHALL BE IMMEDIATELY RETURNED ON DEMAND, AND IS SUBJECT TO ALL OTHER TERMS AND CONDITIONS OF ANY WRITTEN AGREEMENT OR PURCHASE ORDER WHICH INCORPORATES OR RELATES TO THIS DRAWING.	<table><tr><td>NO.</td><td>DATE</td><td>BY</td><td>APP'D</td><td>DESCRIPTION</td></tr><tr><td>B</td><td>02/23/09</td><td>SL</td><td>JD</td><td>DELETED 'AIR INSTRUMENT' COMPRESSOR.</td></tr><tr><td colspan="5">REVISIONS</td></tr></table>				NO.	DATE	BY	APP'D	DESCRIPTION	B	02/23/09	SL	JD	DELETED 'AIR INSTRUMENT' COMPRESSOR.	REVISIONS					<table><tr><td>DRAWN</td><td>SL</td><td>02/13/09</td></tr><tr><td>CHECK</td><td></td><td></td></tr><tr><td>DESIGN</td><td></td><td></td></tr><tr><td>PROJ ENGR</td><td></td><td></td></tr><tr><td>PROJ MGR</td><td></td><td></td></tr><tr><td>QA MGR</td><td></td><td></td></tr><tr><td>SCALE</td><td>NONE</td><td>SIZE D</td></tr></table>	DRAWN	SL	02/13/09	CHECK			DESIGN			PROJ ENGR			PROJ MGR			QA MGR			SCALE	NONE	SIZE D		907 SOUTH DETROIT AVE. SUITE 1140 TULSA, OKLAHOMA 74120 OFFICE FAX www.proenergyservices.com	<b>ProEnergy EPC Services, LLC</b> ONE LINE DIAGRAM TWO 2 FRAME 7EA GENERATOR UNITS POWER PLANT			
NO.	DATE	BY	APP'D	DESCRIPTION																																													
B	02/23/09	SL	JD	DELETED 'AIR INSTRUMENT' COMPRESSOR.																																													
REVISIONS																																																	
DRAWN	SL	02/13/09																																															
CHECK																																																	
DESIGN																																																	
PROJ ENGR																																																	
PROJ MGR																																																	
QA MGR																																																	
SCALE	NONE	SIZE D																																															
			MARACAIBO		JOB. NO.		DWG. NO.		SH. NO.		REV																																						
			T9005-A		60-002		1		B																																								



**DERWICK ASSOCIATES CORP.**

**Frame 7EA Power Project  
Technical Scope Document**

---

**Section 12.0 Major Equipment Specifications**

- 12.1 Oily Water Separator**
- 12.2 Instrument Air Compressor**
- 12.3 Plant DCS System (By ProEnergy EPC)**